



ZIRCONIO
— *the Quintessential* —

MASTER
CATALOGUE

2018

ZIRCONIO
— *the Quintessential* —

INDEX

ALPHABETICAL ORDER

112 ANTIQUE

WHITE BODY TILE · WALL USE



16 DUKE

PORCELAIN TILE · WALL USE · FLOOR USE



28 NEWPORT

PORCELAIN TILE · WALL USE · FLOOR USE



178 STONE

PORCELAIN TILE · WALL USE · FLOOR USE



40 BASIS

PORCELAIN TILE · WHITE BODY TILE · WALL USE · FLOOR USE



54 ETRURIA

PORCELAIN TILE · WHITE BODY TILE · WALL USE · FLOOR USE



174 PORTLAND

PORCELAIN TILE · WALL USE · FLOOR USE



182 SURFACE

PORCELAIN TILE · WALL USE · FLOOR USE



80 CA MARMO

PORCELAIN TILE · WHITE BODY TILE · WALL USE · FLOOR USE



118 IDEA

WHITE BODY TILE · WALL USE



72 RUST

PORCELAIN TILE · WALL USE · FLOOR USE



152 TALCO

WHITE BODY TILE · WALL USE



84 CALACATTA

PORCELAIN TILE · WHITE BODY TILE · WALL USE · FLOOR USE



98 IMPERIUM

PORCELAIN TILE · WALL USE · FLOOR USE



102 S. THOMAS

PORCELAIN TILE · WHITE BODY TILE · WALL USE · FLOOR USE



32 TIMBER

PORCELAIN TILE · WALL USE · FLOOR USE



10 COLONIAL

PORCELAIN TILE · WALL USE · FLOOR USE



20 KREA

PORCELAIN TILE · WALL USE · FLOOR USE



128 SILVER

WHITE BODY TILE · WALL USE



106 VENATO

PORCELAIN TILE · WHITE BODY TILE · WALL USE · FLOOR USE



46 CONCRETE

PORCELAIN TILE · WHITE BODY TILE · WALL USE · FLOOR USE



170 LAND

PORCELAIN TILE · WALL USE · FLOOR USE



134 SMOOTH

PORCELAIN TILE · WALL USE · FLOOR USE



164 VISUAL

PORCELAIN TILE · WALL USE · FLOOR USE



92 CREMA MARFIL

PORCELAIN TILE · WHITE BODY TILE · WALL USE · FLOOR USE



122 LONA

WHITE BODY TILE · WALL USE



146 SNOW

WHITE BODY TILE · WALL USE



158 DECK

PORCELAIN TILE · WALL USE · FLOOR USE



62 MANHATTAN

PORCELAIN TILE · WHITE BODY TILE · WALL USE · FLOOR USE



INDEX

TYPOLOGY ORDER

MASTER
CATALOGUE
ZIRCONIO

WOOD & CO.

10 COLONIAL	20 KREA	32 TIMBER
16 DUKE	28 NEWPORT	

URBAN

40 BASIS	54 ETRURIA	72 RUST
46 CONCRETE	62 MANHATTAN	

STONE & MARBLE

80 CA MARMO	92 CREMA MARFIL	102 S. THOMAS
84 CALACATTA	98 IMPERIUM	106 VENATO

B&W COLOURS

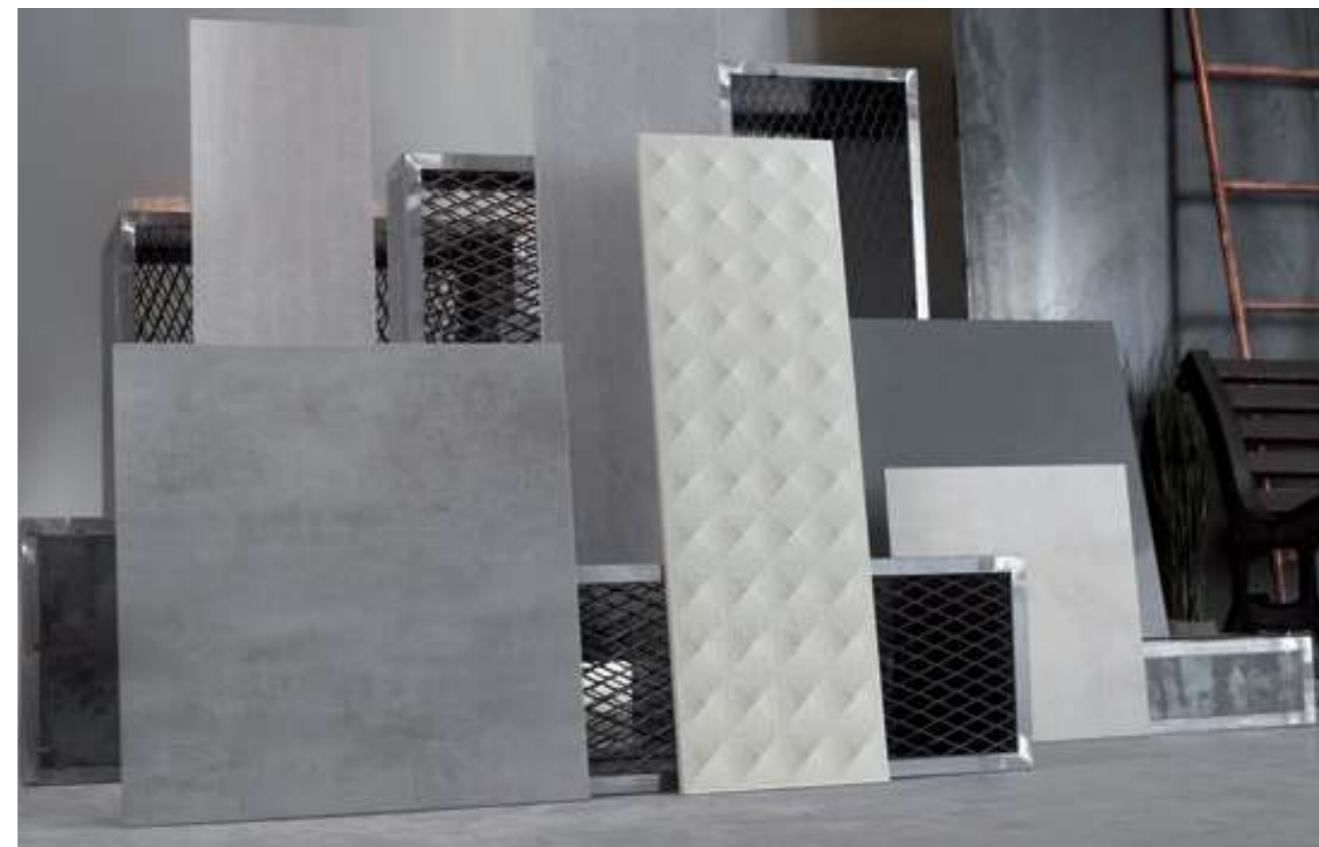
112 ANTIQUE	128 SILVER	152 TALCO
118 IDEA	134 SMOOTH	
122 LONA	146 SNOW	

TECH

158 DECK	164 VISUAL	
----------	------------	--

SMART

170 LAND	178 STONE	182 SURFACE
174 PORTLAND		



USE GUIDE

AVAILABLE SIZES (CM)
FORMATOS DISPONIBLES (CM)

PRODUCT DESCRIPTION SYMBOLS
SÍMBOLOS DE DESCRIPCIÓN DE PRODUCTO

COLLECTION NAME
NOMBRE DE LA COLECCIÓN

FINISHINGS
ACABADOS

MATERIAL TYPE
TIPO DE MATERIAL

PRICE CODE
CÓDIGO DE PRECIO

SETTING
AMBIENTE

PACKING LIST
LISTA DE EMBALAJE

TECHNICAL SPECIFICATIONS
ESPECIFICACIONES TÉCNICAS

NOTES
NOTAS

AVAILABLE COLOURS
COLORES DISPONIBLES

PAGE NUMBER
NÚMERO DE PÁGINA

SIZE
TAMAÑO

CAPTION
PIE DE FOTO



V1
UNIFORM
from tile to tile
UNIFORME
entre piezas



V2
SLIGHTLY
noticeable from tile to tile
LIGERAMENTE
perceptible entre piezas



V3
MODERATELY
noticeable from tile to tile
MODERADAMENTE
perceptible entre piezas



V4
DISTINCTLY
noticeable from tile to tile
DISTINGIBLE
entre piezas



FLOOR TILES
PAVIMENTO



WALL TILES
REVSTIMIENTO



RECTIFICADO
RECTIFIED



Dimension and surface appearance
Dimensión y aspecto superficial



Water absorption
Absorción de agua



Tensile strength
Resistencia a la flexión



Thermal resistance
Resistencia térmica



Frost resistance
Resistencia a la helada



Chemical Resistance
Resistencia Química



Stain resistance
Resistencia a las manchas



Scratch resistance
Resistencia al rayado



Level of use
Niveles de uso



Slip resistance
Resistencia al deslizamiento

- ○ **LIGHT TRAFFIC** Can be installed in bedrooms and bathrooms of private dwellings.
TRÁFICO LIGERO Se pueden colocar en dormitorios y baños de viviendas privadas.
- ○ ○ **MEDIUM-LIGHT TRAFFIC** These can be installed in all rooms of private dwellings.
TRÁFICO PEATONAL LIGERO Pueden ser colocados en habitaciones de viviendas privadas.
- ○ ○ **MEDIUM PEDESTRIAN TRAFFIC** All private rooms, also hotel rooms and bathrooms.
TRÁFICO PEATONAL MEDIO Habitaciones privadas, y también habitaciones de hotel y baño.
- ● ○ **MEDIUM-HEAVY TRAFFIC** All public premises, excluding places of heavy traffic.
TRÁFICO PEATONAL DENSO Todos lugares públicos, excluyendo lugares con tráfico intenso.
- ● ● **HEAVY TRAFFIC** These can be installed in public premises with heavy traffic.
TRÁFICO INTENSO Puede ser colocado en lugares públicos de tráfico intenso.

WOOD & CO.

- 10 COLONIAL
- 16 DUKE
- 20 KREA
- 28 NEWPORT
- 32 TIMBER



COLONIAL

MASTER
CATALOGUE
ZIRCONIO



SIZE OPTIONS

PORCELAIN TILE:

20x120



COLLECTION SPECS

COLOURS:

WHITE



NATURAL



BLACK



FINISHINGS:

MATT

NOTES:

- SPECIAL PIECES AVAILABLE:
STEP, CORNER, TREAD, RAIL &
SKIRTING. PÁGINA 184

- PIEZAS ESPECIALES
DISPONIBLES: PELDAÑOS Y
RODAPIÉS. PÁGINA 184



PORCELAIN TILE TECHNICAL SPECS



CUMPLE
COMPLY

< 0,2%

> 35 N/mm²

CUMPLE
COMPLY

RESISTE
RESISTS

GA-GLA-GHA

CLASE 5

MOHS 7

CLASE 1

● ● ○

COLONIAL NATURAL MATT 20x120



COLONIAL BLACK MATT 20x120

PORCELAIN TILE:



COLONIAL WHITE MATT 20x120



COLONIAL NATURAL MATT 20x120



COLONIAL BLACK MATT 20x120



COLONIAL WHITE MATT 20x120

DUKE



SIZE OPTIONS

PORCELAIN TILE:

20x120



COLLECTION SPECS

COLOURS:

FRESNO



NOGAL



FINISHINGS:

MATT
GRIP

NOTES:

- SPECIAL PIECES AVAILABLE:
STEP, CORNER, TREAD, RAIL &
SKIRTING. PAGE 184

- PIEZAS ESPECIALES
DISPONIBLES: PELDAÑOS Y
RODAPIÉS. PÁGINA 184

PORCELAIN TILE TECHNICAL SPECS



CUMPLE
COMPLY



< 0,2%



> 35 N/mm²



CUMPLE
COMPLY



RESISTE
RESISTS



GA-GLA-GHA



CLASE 5



MOHS 5



MATT
R10
GRIP
R11



MATT
CLASE 1
GRIP
CLASE 3

MASTER
CATALOGUE
ZIRCONIO



DUKE NOGAL 20x120

PORCELAIN TILE:



DUKE FRESNO 20x120
DUKE FRESNO GRIP 20x120



DUKE NOGAL 20x120
DUKE NOGAL GRIP 20x120



DUKE FRESNO 20x120

KREA



SIZE OPTIONS

PORCELAIN TILE:

30x120



20x120



COLLECTION SPECS

COLOURS:

ÁLAMO ASH



ÁLAMO NATURAL



OREGÓN AVENA



OREGÓN LINO



SÁNDALO ENEA



SÁNDALO NUEZ



FINISHINGS:

MATT

ANTI-SLIP

NOTES:

- SPECIAL PIECES AVAILABLE:
STEP, CORNER, TREAD, RAIL &
SKIRTING. PAGE 184

- PIEZAS ESPECIALES
DISPONIBLES: PELDAÑOS Y
RODAPIÉS. PÁGINA 184

PORCELAIN TILE TECHNICAL SPECS



CUMPLE
COMPLY



< 0,2%



> 35 N/mm²



CUMPLE
COMPLY



RESISTE
RESISTS



GA-GLA-GHA



CLASE 5



AA OA SE SN
MOHS 6
AN OL
MOHS 7



MATT
CLASE 2
R10
ANTI-SLIP
CLASE 3
R13
OREGÓN
MATT
R11



● ● ○



ÁLAMO ASH 20x120



OREGÓN LINO 20x120

PORCELAIN TILE:



ÁLAMO ASH 30x120



ÁLAMO ASH 20x120
ÁLAMO ASH ANTI-SLIP 20x120



ÁLAMO NATURAL 30x120



ÁLAMO NATURAL 20x120
ÁLAMO NATURAL ANTI-SLIP 20x120



SÁNDALO ENEA 30x120



SÁNDALO ENEA 20x120
SÁNDALO ENEA ANTI-SLIP 20x120



SÁNDALO ENEA 20x120



OREGÓN AVENA 20x120

PORCELAIN TILE:



SÁNDALO NUEZ 30x120



SÁNDALO NUEZ 20x120
SÁNDALO NUEZ ANTI-SLIP 20x120



OREGÓN AVENA 30x120



OREGÓN AVENA 20x120
OREGÓN AVENA ANTI-SLIP 20x120



OREGÓN LINO 30x120



OREGÓN LINO 20x120
OREGÓN LINO ANTI-SLIP 20x120

NEWPORT

MASTER
CATALOGUE
ZIRCONIO



SIZE OPTIONS

PORCELAIN TILE:

30x120



20x120



COLLECTION SPECS

COLOURS:

WHITE



BEIGE



GREY



FINISHINGS:

MATT

NOTES:

- SPECIAL PIECES AVAILABLE:
STEP, CORNER, TREAD, RAIL &
SKIRTING. PAGE 184

- PIEZAS ESPECIALES
DISPONIBLES: PELDAÑOS Y
RODAPIÉS. PÁGINA 184

PORCELAIN TILE TECHNICAL SPECS



CUMPLE
COMPLY



< 0,2%



> 35 N/mm²



CUMPLE
COMPLY



RESISTE
RESISTS



GA-GLA-GHA



CLASE 5



MOHS 5



CLASE 1
R9



● ○ ○



NEWPORT BEIGE 20x120

PORCELAIN TILE:



NEWPORT WHITE 30x120



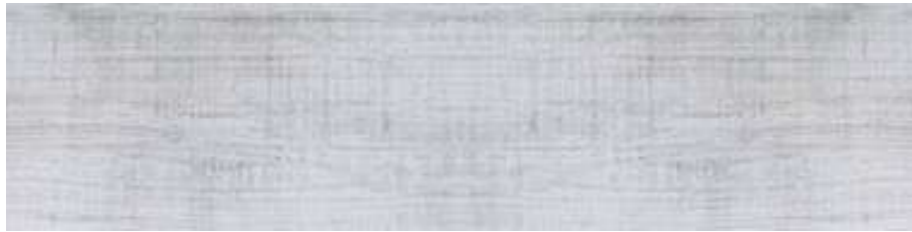
NEWPORT WHITE 20x120



NEWPORT BEIGE 30x120



NEWPORT BEIGE 20x120



NEWPORT GREY 30x120



NEWPORT GREY 20x120



NEWPORT GREY 20x120

TIMBER

MASTER
CATALOGUE
ZIRCONIO



SIZE OPTIONS

PORCELAIN TILE:

30x120



20x120



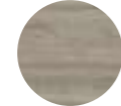
COLLECTION SPECS

COLOURS:

NATURAL



CENIZA



LINO



NUEZ



FINISHINGS:

MATT

ANTI-SLIP

NOTES:

- ANTI-SLIP ONLY AVAILABLE FOR 20x120 TILES.
- SPECIAL PIECES AVAILABLE: STEP, CORNER, TREAD, RAIL & SKIRTING. PAGE 184
- ANTI-SLIP SÓLO DISPONIBLE EN PIEZAS DE 20x120.
- PIEZAS ESPECIALES DISPONIBLES: PELDAÑOS Y RODAPIÉS. PÁGINA 184

PORCELAIN TILE TECHNICAL SPECS



CUMPLE
COMPLY



< 0,2%



> 35 N/mm²



CUMPLE
COMPLY



RESISTE
RESISTS



GA-GLA-GHA



CLASE 5



MOHS 5



MATT
CLASE 2

R10

ANTI-SLIP
CLASE 3

R13



● ● ○



TIMBER CENIZA 20x120 & 30x120

PORCELAIN TILE:



TIMBER CENIZA 30x120



TIMBER CENIZA 20x120

TIMBER CENIZA ANTI-SLIP 20x120



TIMBER LINO 30x120



TIMBER LINO 20x120

TIMBER LINO ANTI-SLIP 20x120



TIMBER LINO 30x120



TIMBER NATURAL 20x120

PORCELAIN TILE:



TIMBER NUEZ 30x120



TIMBER NUEZ 20x120

TIMBER NUEZ ANTI-SLIP 20x120

TIMBER NUEZ 20x120 & 30x120

PORCELAIN TILE:



TIMBER NATURAL 30x120



TIMBER NATURAL 20x120

TIMBER NATURAL ANTI-SLIP 20x120



URBAN

- 40 BASIS
- 46 CONCRETE
- 54 ETRURIA
- 62 MANHATTAN
- 72 RUST



BASIS

MASTER
CATALOGUE
ZIRCONIO



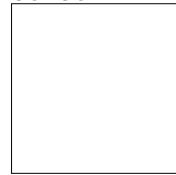
SIZE OPTIONS

PORCELAIN TILE:

60x120



60x60

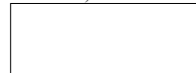


WHITE BODY TILE:

30x90



25x66,6



COLLECTION SPECS

COLOURS:

WHITE



LIGHT GREY



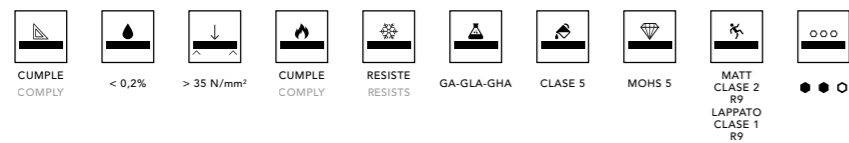
FINISHINGS:

MATT
LAPPATO

NOTES:

- 30x90 ONLY AVAILABLE IN MATT FINISHING
- SPECIAL PIECES AVAILABLE: STEP, CORNER, TREAD, RAIL & SKIRTING. PÁGINA 184
- 30x90 SOLO DISPONIBLE EN ACABADO MATE
- PIEZAS ESPECIALES DISPONIBLES: PELDAÑOS Y RODAPIÉS. PÁGINA 184

PORCELAIN TILE TECHNICAL SPECS



BASIS WHITE MATT 60x120

PORCELAIN TILE:



BASIS WHITE MATT 60x120
BASIS WHITE LAPPATO 60x120



BASIS WHITE MATT 60x60
BASIS WHITE LAPPATO 60x60

WHITE BODY TILE:



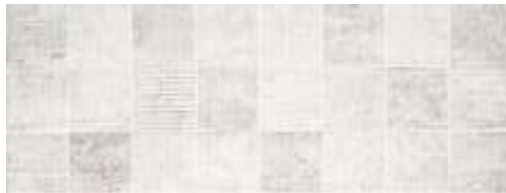
BASIS WHITE 30x90



WAVE BASIS WHITE 30x90



BASIS WHITE 25x66,6



BLOCKS BASIS WHITE 25x66,6

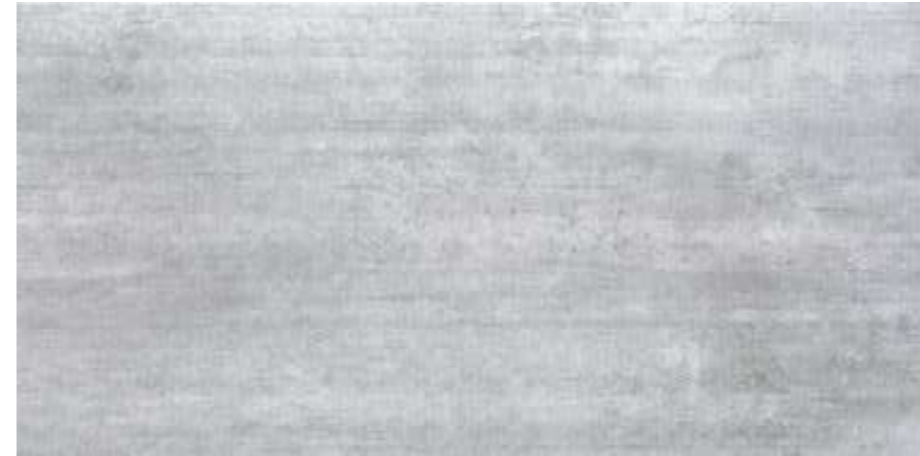


BASIS WHITE 30x90 - SMOOTH GREY 60x60



BASIS LIGHT GREY 30x90 - BASIS LIGHT GREY MATT 60x60

PORCELAIN TILE:



BASIS LIGHT GREY MATT 60x120
BASIS LIGHT GREY LAPPATO 60x120



BASIS LIGHT GREY MATT 60x60
BASIS LIGHT GREY LAPPATO 60x60

WHITE BODY TILE:



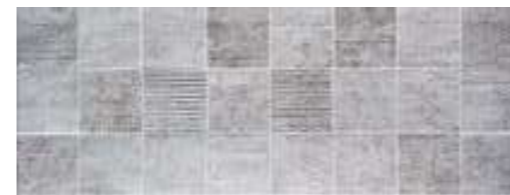
BASIS LIGHT GREY 30x90



WAVE BASIS LIGHT GREY 30x90



BASIS LIGHT GREY 25x66,6



BLOCKS BASIS LIGHT GREY 25x66,6

CONCRETE

MASTER
CATALOGUE
ZIRCONIO



SIZE OPTIONS

PORCELAIN TILE:

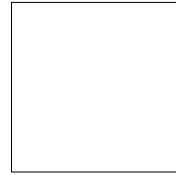
60x120



20x120



60x60



WHITE BODY TILE:

30x90



COLLECTION SPECS

COLOURS:

WHITE



GREY



TAUPE



FINISHINGS:

MATT

NOTES:

- SPECIAL PIECES AVAILABLE:
STEP, CORNER, TREAD, RAIL &
SKIRTING. PAGE 184

- PIEZAS ESPECIALES
DISPONIBLES: PELDAÑOS Y
RODAPIÉS. PÁGINA 184

PORCELAIN TILE TECHNICAL SPECS



EMIN TAUPE 30x90

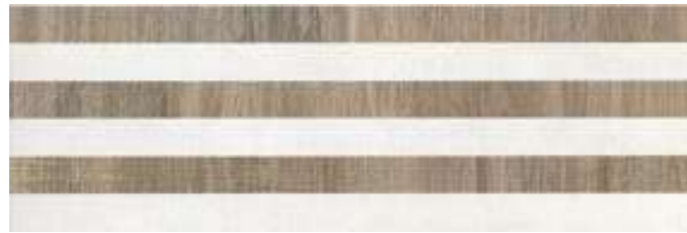
WHITE BODY TILE:



CONCRETE WHITE 30x90



KAMET WHITE 30x90



EMIN WHITE 30x90



KAMET WHITE 30x90 - ELGON GREY 20x120



KAMET GREY 30x90 - CONCRETE GREY 60x60

PORCELAIN TILE:



CONCRETE GREY 60x120



CONCRETE GREY 60x60



ELGON GREY 20x120

PORCELAIN TILE:



CONCRETE TAUPE 60x120



CONCRETE TAUPE 60x60



ELGON TAUPE 20x120

WHITE BODY TILE:



CONCRETE GREY 30x90



KAMET GREY 30x90



EMIN GREY 30x90

WHITE BODY TILE:



CONCRETE TAUPE 30x90



KAMET TAUPE 30x90



EMIN TAUPE 30x90

ETRURIA

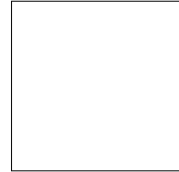
MASTER
CATALOGUE
ZIRCONIO



SIZE OPTIONS

PORCELAIN TILE:

60x60



WHITE BODY TILE:

30x90



COLLECTION SPECS

COLOURS:

CALIZA



BONE



STONE



FINISHINGS:

MATT - TEXTURE

NOTES:

- SPECIAL PIECES AVAILABLE:
STEP, CORNER, TREAD, RAIL &
SKIRTING. PAGE 184

- PIEZAS ESPECIALES
DISPONIBLES: PELDAÑOS Y
RODAPIÉS. PÁGINA 184

PORCELAIN TILE TECHNICAL SPECS



RUMA ETRURIA BONE 30x90



ETRURIA CALIZA 30x90 - FELSINA ETRURIA CALIZA 30x90 - ETRURIA CALIZA 60x60



ETRURIA CALIZA 30x90 · ETRURIA CALIZA 60x60

WHITE BODY TILE:



ETRURIA BONE 30x90



PRISMA ETRURIA BONE 30x90



RUMA ETRURIA BONE 30x90



FELSINA ETRURIA BONE 30x90

PERFIL SILVER 0,5x90



ETRURIA STONE 30x90



PRISMA ETRURIA STONE 30x90



RUMA ETRURIA STONE 30x90



FELSINA ETRURIA STONE 30x90

WHITE BODY TILE:



ETRURIA CALIZA 30x90



PRISMA ETRURIA CALIZA 30x90



RUMA ETRURIA CALIZA 30x90



FELSINA ETRURIA CALIZA 30x90

PORCELAIN TILE:



ETRURIA CALIZA 60x60



ETRURIA BONE 60x60



ETRURIA STONE 60x60



ETRURIA STONE 30x90 - PRISMA ETRURIA STONE 30x90 - TIMBER LINO 30x120

MANHATTAN

MASTER
CATALOGUE
ZIRCONIO



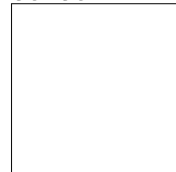
SIZE OPTIONS

PORCELAIN TILE:

60x120



60x60

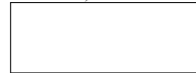


WHITE BODY TILE:

30x90



25x66,6



COLLECTION SPECS

COLOURS:

WHITE



BONE



GREY



ANTRACITE



FINISHINGS:

MATT
ANTI-SLIP

NOTES:

- ANTI-SLIP ONLY AVAILABLE AT 60x60 GREY & ANTRACITE.
- SPECIAL PIECES AVAILABLE: STEP, CORNER, TREAD, RAIL & SKIRTING. PÁGINA 184
- ANTI-SLIP SÓLO DISPONIBLE EN 60x60 GREY & ANTRACITE.
- PIEZAS ESPECIALES DISPONIBLES: PELDAÑOS Y RODAPIÉS. PÁGINA 184

PORCELAIN TILE TECHNICAL SPECS



CUMPLE
COMPLY



< 0,2%



> 35 N/mm²



CUMPLE
COMPLY



RESISTE
RESISTS



GA-GLA-GHA



CLASE 5



MOHS 7



MATT
CLASE 1
AS
CLASE 3



● ● ○



MANHATTAN BONE MATT 30x90 · SOHO BONE MATT 30x90 · COLONIAL NATURAL MATT 20x120

PORCELAIN TILE:

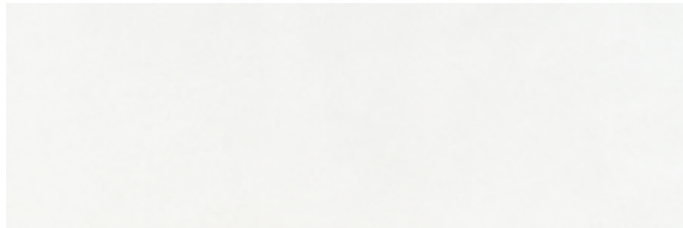


MANHATTAN WHITE MATT 60x120

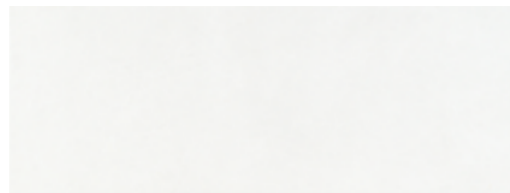


MANHATTAN WHITE MATT 60x60

WHITE BODY TILE:



MANHATTAN WHITE MATT 30x90



MANHATTAN WHITE MATT 25x66,6



SOHO WHITE MATT 30x90



MADISON WHITE MATT 25x66,6



MANHATTAN GREY MATT 30x90 · MANHATTAN WHITE MATT 60x120



NOLITA BONE MATT 60x60 - COLONIAL NATURAL MATT 20x120

PORCELAIN TILE:



MANHATTAN BONE MATT 60x120



MANHATTAN BONE MATT 60x60



NOLITA BONE MATT 60x60

WHITE BODY TILE:



MANHATTAN BONE MATT 30x90



MANHATTAN BONE MATT 25x66,6

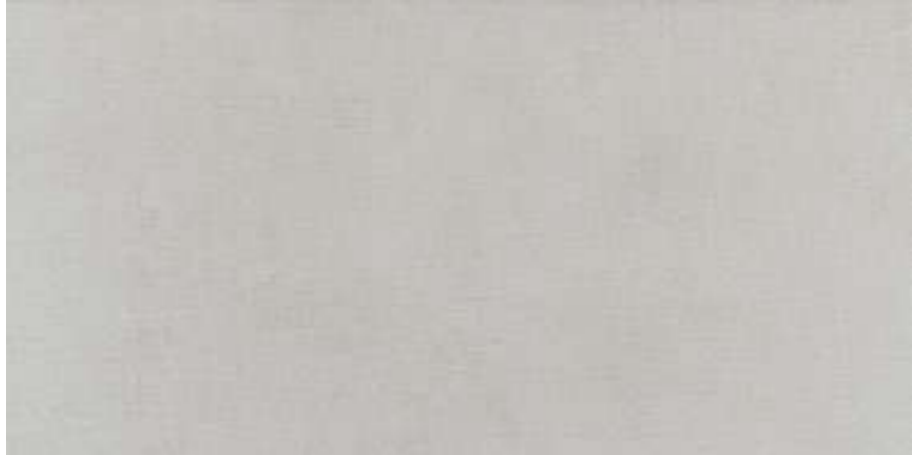


SOHO BONE MATT 30x90

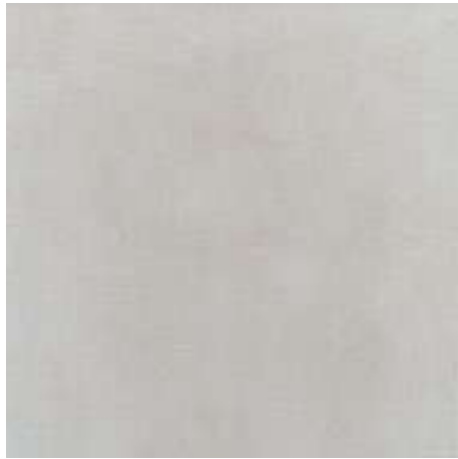


MADISON BONE MATT 25x66,6

PORCELAIN TILE:



MANHATTAN GREY MATT 60x120



MANHATTAN GREY MATT 60x60
MANHATTAN GREY ANTI-SLIP 60x60



NOLITA GREY MATT 60x60

WHITE BODY TILE:



MANHATTAN GREY MATT 30x90



MANHATTAN GREY MATT 25x66,6



SOHO GREY MATT 30x90



MADISON GREY MATT 25x66,6



MANHATTAN GREY MATT 25x66,6 - MADISON GREY MATT 25x66,6 - MANHATTAN GREY MATT 60x60



MANHATTAN ANTRACITE MATT 30x90 - MANHATTAN BONE MATT 60x120

PORCELAIN TILE:



MANHATTAN ANTRACITE MATT 60x120



MANHATTAN ANTRACITE MATT 60x60
MANHATTAN ANTRACITE ANTI-SLIP 60x60

WHITE BODY TILE:



MANHATTAN ANTRACITE MATT 30x90



MANHATTAN ANTRACITE MATT 25x66,6



SOHO ANTRACITE MATT 30x90



MADISON ANTRACITE MATT 25x66,6

RUST



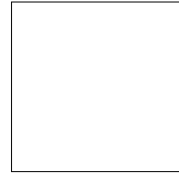
SIZE OPTIONS

PORCELAIN TILE:

60x120



60x60



COLLECTION SPECS

COLOURS:

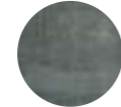
OXIDE



NICKEL



STEEL



FINISHINGS:

MATT

LAPPATO

NOTES:

- SPECIAL PIECES AVAILABLE:
STEP, CORNER, TREAD, RAIL &
SKIRTING. PAGE 184

- PIEZAS ESPECIALES
DISPONIBLES: PELDAÑOS Y
RODAPIÉS. PÁGINA 184

PORCELAIN TILE TECHNICAL SPECS



CUMPLE
COMPLY



< 0,2%



> 35 N/mm²



CUMPLE
COMPLY



RESISTE
RESISTS



GA-GLA-GHA



CLASE 5



MOHS 5



MATT
CLASE 2
R10



LAPPATO
CLASE 1
R10



RUST OXIDE 60x120



RUST NICKEL 60x120

PORCELAIN TILE:



RUST OXIDE MATT 60x120
RUST OXIDE LAPPATO 60x120



RUST OXIDE MATT 60x60
RUST OXIDE LAPPATO 60x60



RUST NICKEL MATT 60x120
RUST NICKEL LAPPATO 60x120



RUST NICKEL MATT 60x60
RUST NICKEL LAPPATO 60x60



RUST STEEL MATT 60x120
RUST STEEL LAPPATO 60x120



RUST STEEL MATT 60x60
RUST STEEL LAPPATO 60x60



RUST STEEL 60x120

STONE & MARBLE

80	CA MARMO
84	CALACATTA
92	CREMA MARFIL
98	IMPERIUM
102	S. THOMAS
106	VENATO

CA MARMO

MASTER
CATALOGUE
ZIRCONIO



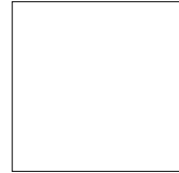
SIZE OPTIONS

PORCELAIN TILE:

60x120



60x60



WHITE BODY TILE:

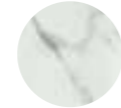
30x90



COLLECTION SPECS

COLOURS:

WHITE



FINISHINGS:

MATT
POLISHED
GLOSSY

NOTES:

- 30x90 ONLY AVAILABLE IN GLOSSY FINISHING.
- SPECIAL PIECES AVAILABLE: STEP, CORNER, TREAD, RAIL & SKIRTING. PAGE 184
- 30x90 SÓLO DISPONIBLE EN ACABADO GLOSSY.
- PIEZAS ESPECIALES DISPONIBLES: PELDAÑOS Y RODAPIÉS. PÁGINA 184

PORCELAIN TILE TECHNICAL SPECS



CUMPLE
COMPLY

< 0,2%

> 35 N/mm²

CUMPLE
COMPLY

RESISTE
RESISTS

GA-GLA-GHA

CLASE 5

MOHS 5

CLASE 1

MATT
● ○ ○
POLISHED
○ ○



CA MARMO WHITE MATT 60x120

PORCELAIN TILE:



CA MARMO WHITE MATT 60x120
CA MARMO WHITE POLISHED 60x120



CA MARMO WHITE MATT 60x60
CA MARMO WHITE POLISHED 60x60

WHITE BODY TILE:



CA MARMO WHITE GLOSSY 30x90



WAVE CA MARMO WHITE GLOSSY 30x90



CA MARMO WHITE POLISHED 60x120 - CA MARMO WHITE 30x90

CALACATTA

MASTER
CATALOGUE
ZIRCONIO



SIZE OPTIONS

PORCELAIN TILE:

60x120



60x60



WHITE BODY TILE:

30x90



COLLECTION SPECS

COLOURS:



FINISHINGS:

MATT
POLISHED
GLOSSY
RELIEF

NOTES:

- SPECIAL PIECES AVAILABLE:
STEP, CORNER, TREAD, RAIL &
SKIRTING. PAGE 184

- PIEZAS ESPECIALES
DISPONIBLES: PELDAÑOS Y
RODAPIÉS. PÁGINA 184

PORCELAIN TILE TECHNICAL SPECS



CUMPLE
COMPLY



< 0,2%



> 35 N/mm²



CUMPLE
COMPLY



RESISTE
RESISTS



GA-GLA-GHA



CLASE 5



POLISHED
MOHS 5
RELIEF
MOHS 7



CLASE 1



POLISHED
○ ○
RELIEF
● ○ ○



CALACATTA MATT 60x120 · MANHATTAN GREY MATT 60x60

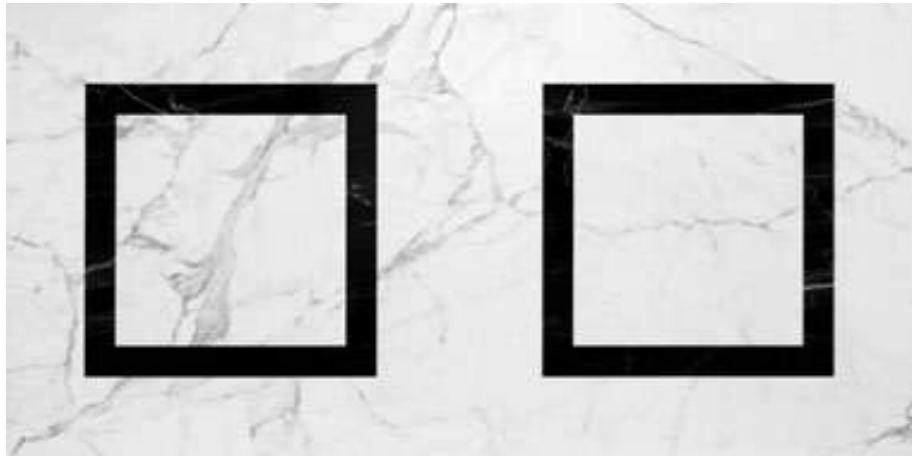
PORCELAIN TILE:



CALACATTA RELIEF 60x120
CALACATTA POLISHED 60x120



CALACATTA RELIEF 60x60
CALACATTA POLISHED 60x60



CALDIA POLISHED 60x120



CALACATTA POLISHED 60x120 - CALDIA POLISHED 60x120



CALACATTA GLOSSY 30x90 - CALACATTA POLISHED 60x120 - MANHATTAN WHITE MATT 60x120

WHITE BODY TILE:



CALACATTA MATT 30x90

CALACATTA GLOSSY 30x90



MAZZA MATT 30x90

MAZZA GLOSSY 30x90



CALACATTA MATT 30x90 - MAZZA MATT 30x90 - CALACATTA MATT 60x60

CREMA MARFIL

MASTER
CATALOGUE
ZIRCONIO



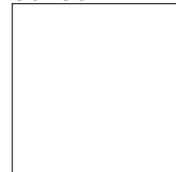
SIZE OPTIONS

PORCELAIN TILE:

60x120



60x60



WHITE BODY TILE:

30x90



COLLECTION SPECS

COLOURS:



FINISHINGS:

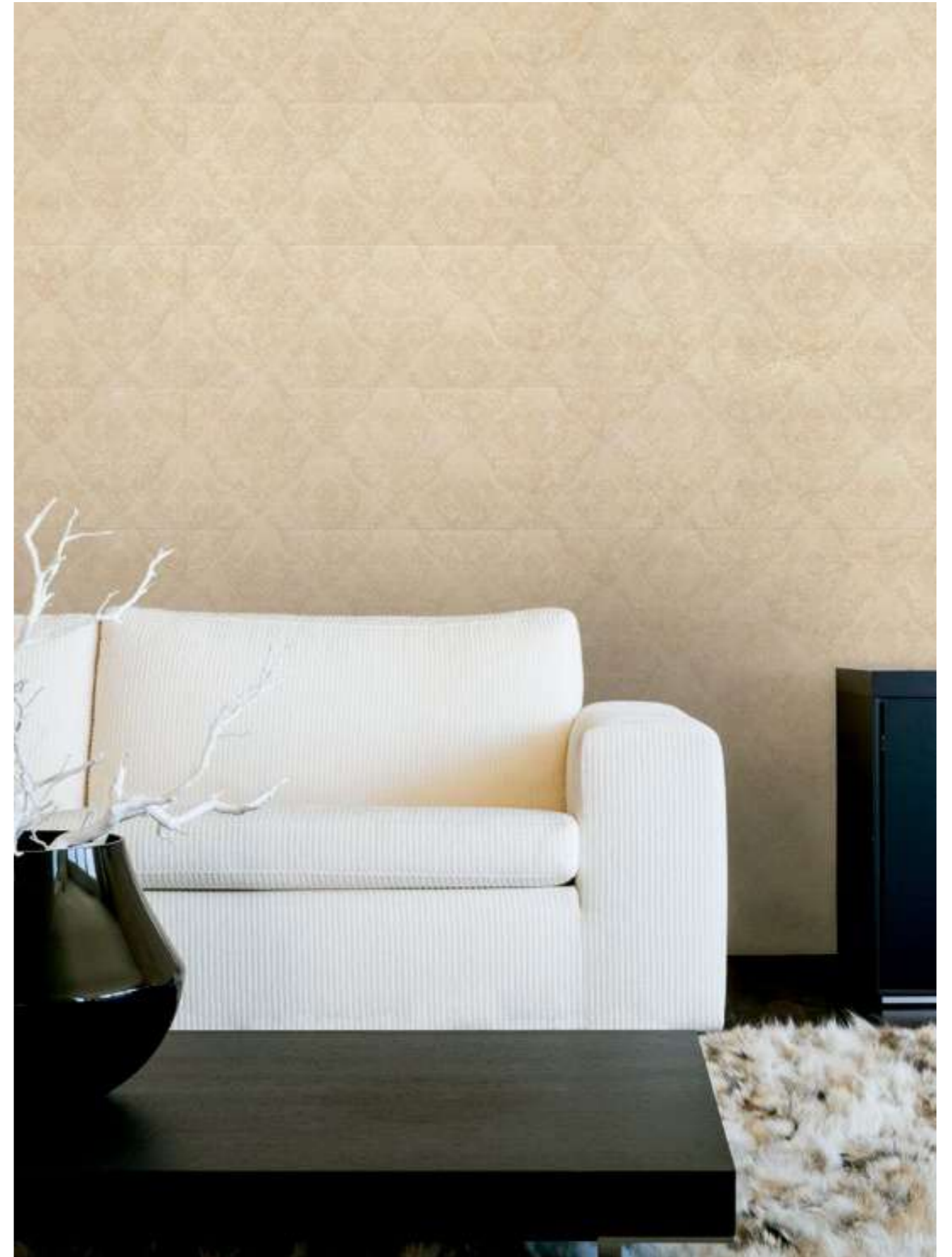
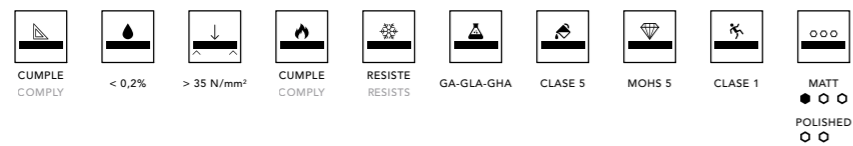
MATE
GLOSSY

NOTES:

- SPECIAL PIECES AVAILABLE:
STEP, CORNER, TREAD, RAIL &
SKIRTING. PAGE 184

- PIEZAS ESPECIALES
DISPONIBLES: PELDAÑOS Y
RODAPIÉS. PÁGINA 184

PORCELAIN TILE TECHNICAL SPECS



TEMPUS MARFIL MATT 30x90

PORCELAIN TILE:



CREMA MARFIL MATT 60x120



CREMA MARFIL MATT 60x60



CREMA MARFIL MATT 60x120

WHITE BODY TILE:



CREMA MARFIL MATT 30x90
CREMA MARFIL GLOSSY 30x90



MAZZA MARFIL MATT 30x90
MAZZA MARFIL GLOSSY 30x90



TEMPUS MARFIL MATT 30x90
TEMPUS MARFIL GLOSSY 30x90



MAZZA MARFIL MATT 30x90 - CREMA MARFIL MATT 60x120

IMPERIUM

MASTER
CATALOGUE
ZIRCONIO



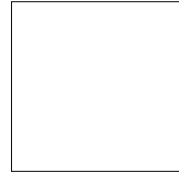
SIZE OPTIONS

PORCELAIN TILE:

60x120



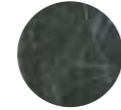
60x60



COLLECTION SPECS

COLOURS:

BLACK



FINISHINGS:

RELIEF

NOTES:

- SPECIAL PIECES AVAILABLE:
STEP, CORNER, TREAD, RAIL &
SKIRTING. PAGE 184

- PIEZAS ESPECIALES
DISPONIBLES: PELDAÑOS Y
RODAPÍES. PÁGINA 184

PORCELAIN TILE TECHNICAL SPECS



IMPERIUM BLACK 60x120

PORCELAIN TILE:



IMPERIUM BLACK 60x120



IMPERIUM BLACK 60x60



IMPERIUM BLACK 60x120

S. THOMAS

MASTER
CATALOGUE
ZIRCONIO



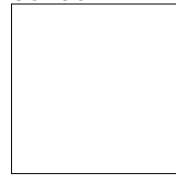
SIZE OPTIONS

PORCELAIN TILE:

60x120



60x60



WHITE BODY TILE:

30x90



COLLECTION SPECS

COLOURS:



FINISHINGS:

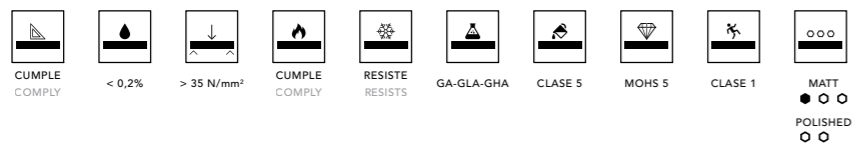
MATT
GLOSSY
POLISHED

NOTES:

- SPECIAL PIECES AVAILABLE:
STEP, CORNER, TREAD, RAIL &
SKIRTING. PAGE 184

- PIEZAS ESPECIALES
DISPONIBLES: PELDAÑOS Y
RODAPIÉS. PÁGINA 184

PORCELAIN TILE TECHNICAL SPECS



S. THOMAS MATT 30x90 · S. THOMAS MATT 60x60

WHITE BODY TILE:



S. THOMAS MATT 30x90
S. THOMAS GLOSSY 30x90



CUBIC S. THOMAS MATT 30x90
CUBIC S. THOMAS GLOSSY 30x90



GEO S. THOMAS MATT 30x90
GEO S. THOMAS GLOSSY 30x90

PERFIL SILVER 0,5x90

PORCELAIN TILE:



S. THOMAS MATT 60x60
S. THOMAS POLISHED 60x60



S. THOMAS POLISHED 60x120



S. THOMAS GLOSSY 30x90 - CUBIC S. THOMAS GLOSSY 30x90 - S. THOMAS MATT 60x60

VENATO

MASTER
CATALOGUE
ZIRCONIO



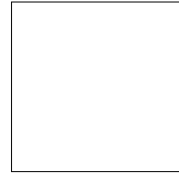
SIZE OPTIONS

PORCELAIN TILE:

60x120



60x60



WHITE BODY TILE:

30x90



COLLECTION SPECS

COLOURS:



FINISHINGS:

MATT
GLOSSY
POLISHED

NOTES:

- SPECIAL PIECES AVAILABLE:
STEP, CORNER, TREAD, RAIL &
SKIRTING. PAGE 184

- PIEZAS ESPECIALES
DISPONIBLES: PELDAÑOS Y
RODAPIÉS. PÁGINA 184



PORCELAIN TILE TECHNICAL SPECS



VENATO MATT 30x90 · GEO VENATO MATT 30x90 · TIMBER NATURAL 30x120

WHITE BODY TILE:



VENATO MATT 30x90
VENATO GLOSSY 30x90



CUBIC VENATO MATT 30x90
CUBIC VENATO GLOSSY 30x90



GEO VENATO MATT 30x90
GEO VENATO GLOSSY 30x90

PERFIL SILVER 0,5x90

PORCELAIN TILE:



VENATO MATT 60x60
VENATO POLISHED 60x60



VENATO POLISHED 60x120



CUBIC VENATO GLOSSY 30x90 - VENATO GLOSSY 30x90 - VENATO MATT 60x60

B&W COLOURS

-
- 112 ANTIQUE
 - 118 IDEA
 - 122 LONA
 - 128 SILVER
 - 134 SMOOTH
 - 146 SNOW
 - 152 TALCO
-



ANTIQUUE

MASTER
CATALOGUE
ZIRCONIO



SIZE OPTIONS

WHITE BODY TILE:

25x66,6



NO RECTIFICADO / NOT RECTIFIED

COLLECTION SPECS

COLOURS:

WHITE



GREY



FINISHINGS:

GLOSSY

NOTES:

- MED GREY AND MED BLUE
HAVE 4 DIFFERENT PATTERN
DESIGNS BOXED AT RANDOM.

- MED GREY Y MED BLUE
TIENE 4 DISEÑOS DIFERENTES
SERVIDOS ALEATORIAMENTE.



ANTIQUUE WHITE 25x66,6 · MED BLUE 25x66,6 · SMOOTH WHITE MATT 60x120



SILVERY 25x66,6

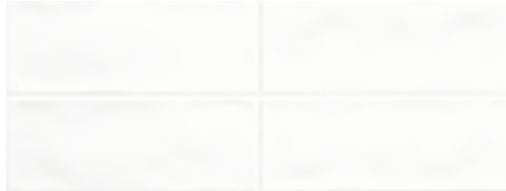
WHITE BODY TILE:



ANTIQUE WHITE 25x66,6



ANTIQUE GREY 25x66,6



ANTIQUE 1 WHITE 25x66,6



MED BLUE 25x66,6



MED GREY 25x66,6



SILVERY 25x66,6



ANTIQUE GREY 25x66,6 - MED GREY 25x66,6 - BASIS WHITE MATT 60x60

IDEA

MASTER
CATALOGUE
ZIRCONIO



SIZE OPTIONS

WHITE BODY TILE:

25x66,6



NO RECTIFICADO / NOT RECTIFIED

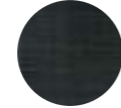
COLLECTION SPECS

COLOURS:

WHITE



BLACK



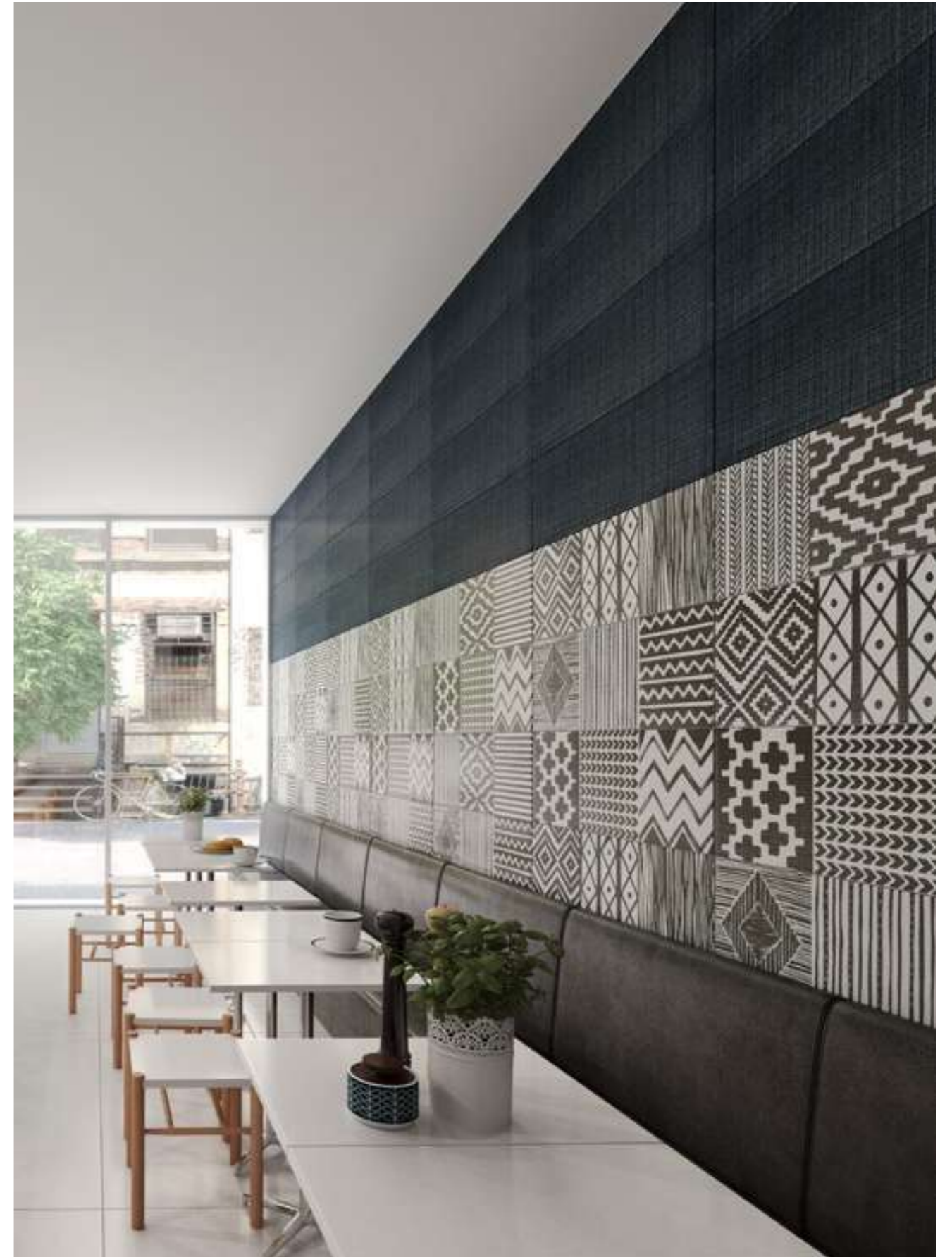
FINISHINGS:

MATT

NOTES:

- ETHNIC BLACK HAS 4
DIFFERENT PATTERN DESIGNS
BOXED AT RANDOM.

- ETHNIC BLACK TIENE
4 DISEÑO DIFERENTES
SERVIDOS ALEATORIAMENTE.



IDEA BLACK 25x66,6 - ETHNIC BLACK 25x66,6 - SMOOTH WHITE MATT 60x120

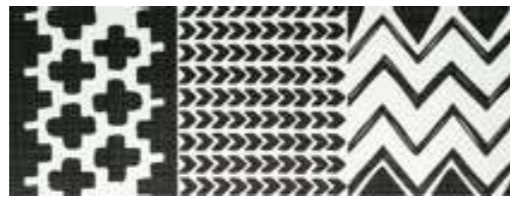
WHITE BODY TILE:



IDEA WHITE 25x66,6



IDEA BLACK 25x66,6



ETHNIC BLACK 25x66,6



IDEA WHITE 25x66,6 · ETHNIC BLACK 25x66,6 · SMOOTH BLACK MATT 60x60

LONA

MASTER
CATALOGUE
ZIRCONIO



SIZE OPTIONS

WHITE BODY TILE:

30x90



COLLECTION SPECS

COLOURS:

WHITE



BONE



TAUPE



FINISHINGS:

MATT-TEXTURE



LONA BONE 30x90 - TIMBER NUEZ 30x120



LONA WHITE 30x90

WHITE BODY TILE:



TALCO 30x90



LONA WHITE 30x90



LONA BONE 30x90



LONA TAUPE 30x90



BAND WHITE 7x30



PLINTH WHITE 15x30



LONA TAUPE 30x90 - NEWPORT WHITE 20x120

SILVER

MASTER
CATALOGUE
ZIRCONIO



SIZE OPTIONS

WHITE BODY TILE:

30x90



FINISHINGS:
GLOSSY-TEXTURE



TOKIO SILVER 30x90

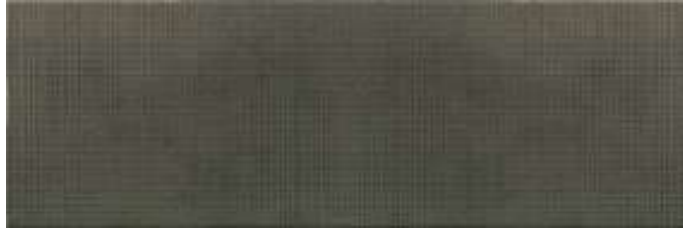


TOKIO SILVER 30x90 - TALCO 30x90



PRISMA SILVER GLOSSY 30x90

WHITE BODY TILE:



TOKIO **SILVER** GLOSSY 30x90



PRISMA **SILVER** GLOSSY 30x90



GEO **SILVER** GLOSSY 30x90



GEO **SILVER** GLOSSY 30x90 · CA MARMO WHITE MATT 60x60

SMOOTH

MASTER
CATALOGUE
ZIRCONIO



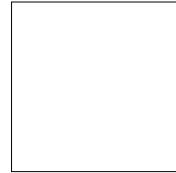
SIZE OPTIONS

PORCELAIN TILE:

60x120



60x60



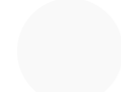
26x28



COLLECTION SPECS

COLOURS:

WHITE



BEIGE



GREY



ANTRACITE



BLACK



FINISHINGS:

MATT
LAPPATO

NOTES:

- LAPPATO ONLY AVAILABLE IN WHITE & BLACK.
- SPECIAL PIECES AVAILABLE: STEP, CORNER, TREAD, RAIL & SKIRTING. PÁGINA 184
- LAPPATO SÓLO DISPONIBLE EN BLANCO & NEGRO.
- PIEZAS ESPECIALES DISPONIBLES: PELDAÑOS Y RODAPIÉS. PÁGINA 184

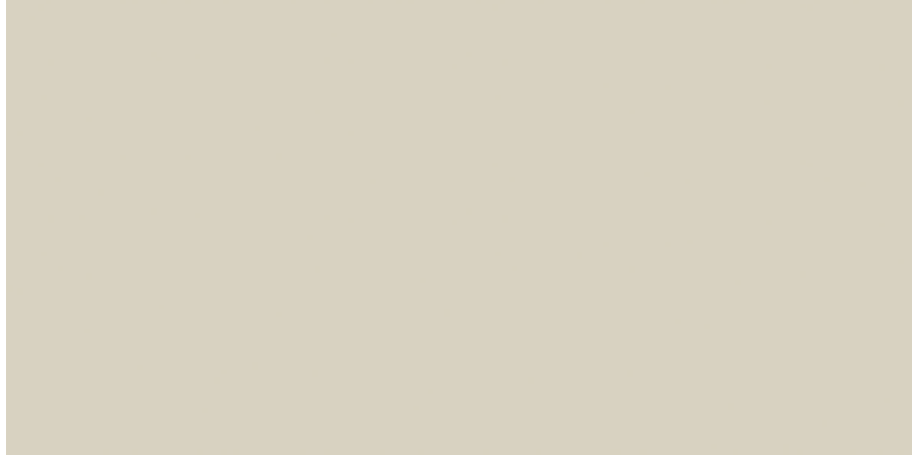


PORCELAIN TILE TECHNICAL SPECS

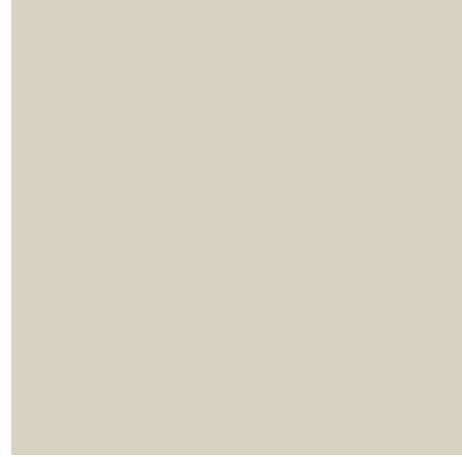


SMOOTH ANTRACITE MATT 60x60

PORCELAIN TILE:



SMOOTH BEIGE MATT 60x120



SMOOTH BEIGE MATT 60x60



MOSAIC-6 SMOOTH BEIGE 26x28



SMOOTH BEIGE MATT 60x120

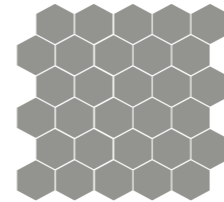
PORCELAIN TILE:



SMOOTH GREY MATT 60x120



SMOOTH GREY MATT 60x60



MOSAIC-6 SMOOTH GREY 26x28



SMOOTH GREY MATT 60x120

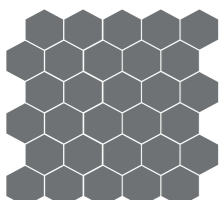
PORCELAIN TILE:



SMOOTH ANTRACITE MATT 60x 120



SMOOTH ANTRACITE MATT 60x60



MOSAIC-6 SMOOTH ANTRACITE 26x28



SMOOTH ANTRACITE MATT 60x120



SMOOTH WHITE LAPPATO 60x60

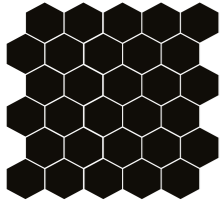


MOSAIC-6 SMOOTH WHITE MATT 26x28

PORCELAIN TILE:



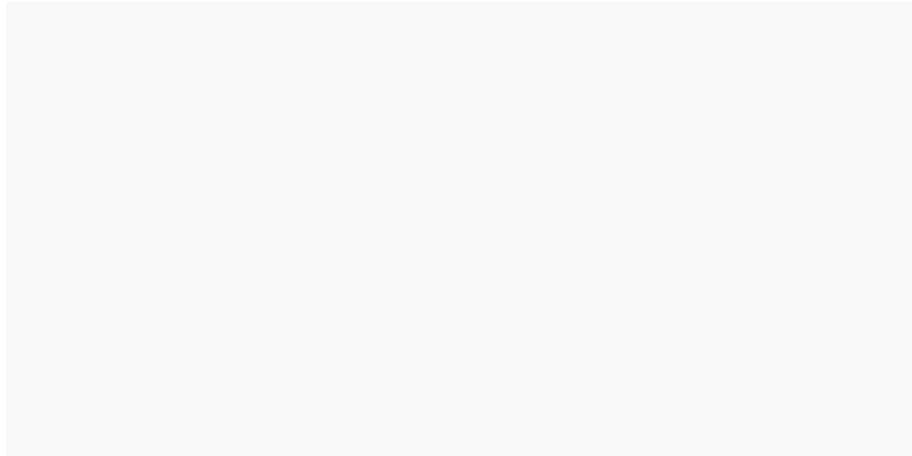
SMOOTH BLACK MATT 60x120
SMOOTH BLACK LAPPATO 60x120



MOSAIC-6 SMOOTH BLACK 26x28



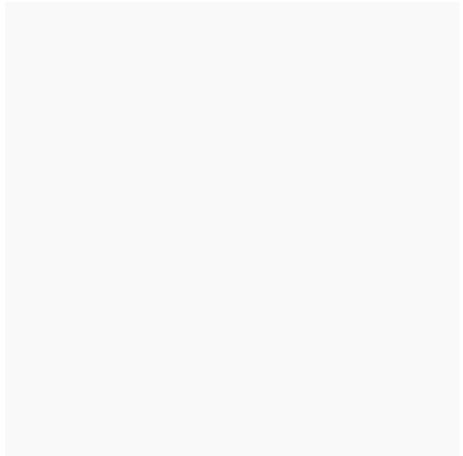
SMOOTH BLACK MATT 60x60
SMOOTH BLACK LAPPATO 60x60



SMOOTH WHITE MATT 60x120
SMOOTH WHITE LAPPATO 60x120



MOSAIC-6 SMOOTH WHITE 26x28



SMOOTH WHITE MATT 60x60
SMOOTH WHITE LAPPATO 60x60



SMOOTH BLACK LAPPATO 60x120

SNOW

MASTER
CATALOGUE
ZIRCONIO



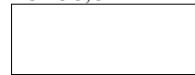
SIZE OPTIONS

WHITE BODY TILE:

30x90



25x66,6



COLLECTION SPECS

FINISHINGS:

MATT
GLOSSY

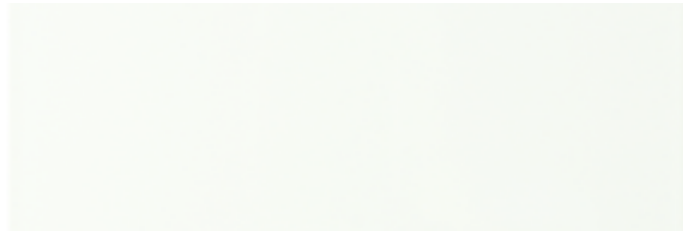


PRISMA ANTÁRTIDA MATT 30x90 - BASIS LIGHT GREY 60x120

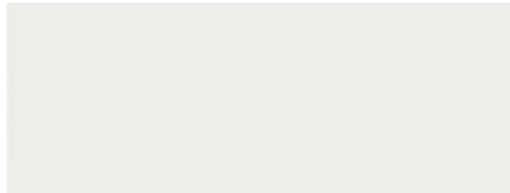
WHITE BODY TILE:



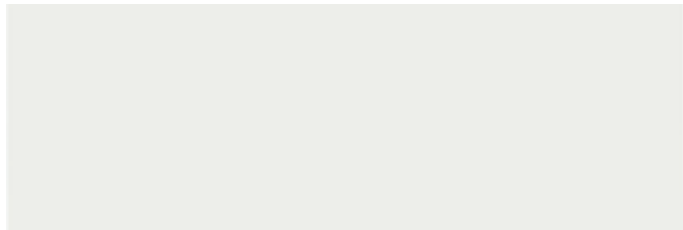
COLOURS BLANCO GLOSSY 25x66,6



GLASS GLOSSY 30x90



POLAR BLANCO MATT 25x66,6



ANTÁRTIDA MATT 30x90



GEO ANTÁRTIDA MATT 30x90 - SÁNDALO ENEA 30x120

WHITE BODY TILE:



CUBIC GLASS GLOSSY 30x90



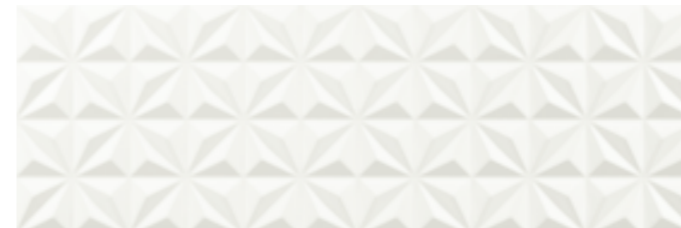
CUBIC ANTÁRTIDA MATT 30x90



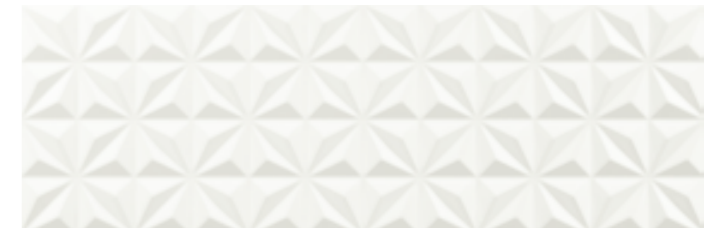
PRISMA GLASS GLOSSY 30x90



PRISMA ANTÁRTIDA MATT 30x90



GEO GLASS GLOSSY 30x90



GEO ANTÁRTIDA MATT 30x90



WAVE GLASS GLOSSY 30x90



WAVE ANTÁRTIDA MATT 30x90

PERFIL SILVER 0,5x90



BAND WHITE 7x30



PLINTH WHITE 15x30



CUBIC GLASS GLOSSY 30x90 · SV STONE LIGHT GREY MATT 60x120

TALCO

MASTER
CATALOGUE
ZIRCONIO



SIZE OPTIONS

WHITE BODY TILE:

30x90



COLLECTION SPECS

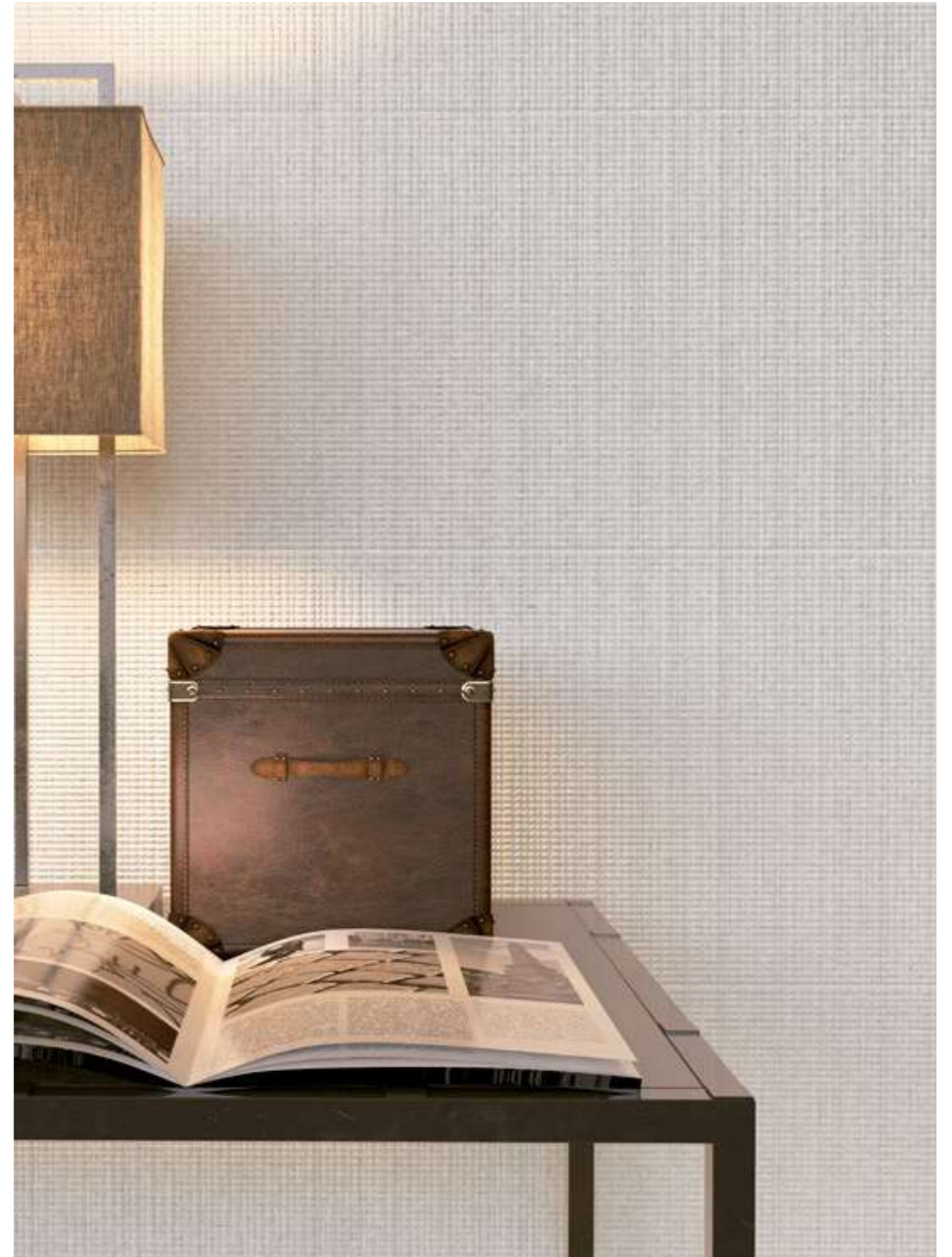
COLOURS:

TALCO



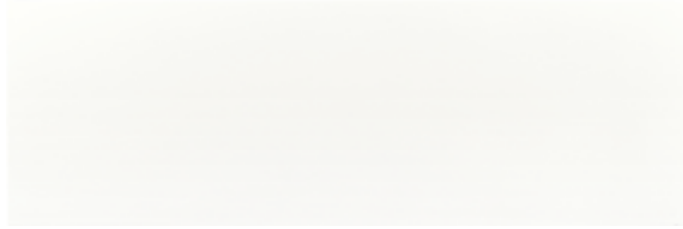
FINISHINGS:

MATT



TOKIO TALCO 30x90

WHITE BODY TILE:



TALCO 30x90



DUBAI TALCO 30x90



TOKIO TALCO 30x90

PERFIL SILVER 0,5x90



DUBAI TALCO 30x90 - TIMBER NATURAL 30x120

TECH

158 DECK
164 VISUAL



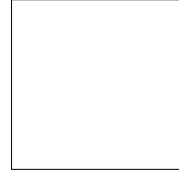
DECK



SIZE OPTIONS

PORCELAIN TILE:

60x60



COLLECTION SPECS

COLOURS:

WHITE



SILVER



GREY



BLACK



FINISHINGS:
POLISHED

NOTES:

- SPECIAL PIECES AVAILABLE:
STEP, CORNER, TREAD, RAIL &
SKIRTING. PAGE 266

- PIEZAS ESPECIALES
DISPONIBLES: PELDAÑOS Y
RODAPIÉS. PÁGINA 266

MASTER
CATALOGUE
ZIRCONIO

PORCELAIN TILE TECHNICAL SPECS



CUMPLE
COMPLY

< 0,2%

> 35 N/mm²

CUMPLE
COMPLY

RESISTE
RESISTS

GA-GLA-GHA

CLASE 5

MOHS 5

CLASE 1

OO

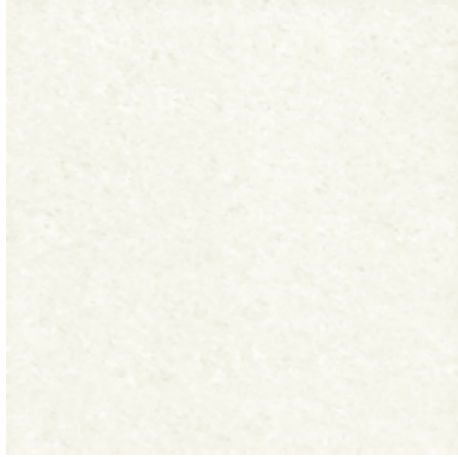


DECK WHITE 60x60



DECK GREY 60x60

PORCELAIN TILE:



DECK WHITE POLISHED 60x60



DECK SILVER POLISHED 60x60



DECK GREY POLISHED 60x60



DECK BLACK POLISHED 60x60



DECK BLACK 60x60

VISUAL

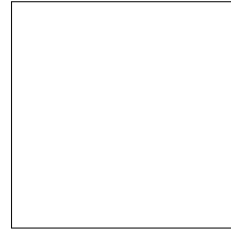
MASTER
CATALOGUE
ZIRCONIO



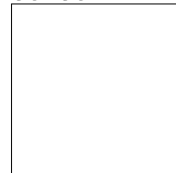
SIZE OPTIONS

PORCELAIN TILE:

80x80



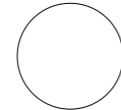
60x60



COLLECTION SPECS

COLOURS:

WHITE



IVORY



FINISHINGS:
POLISHED

NOTES:

- SPECIAL PIECES AVAILABLE:
STEP, CORNER, TREAD, RAIL &
SKIRTING. PAGE 266

- PIEZAS ESPECIALES
DISPONIBLES: PELDAÑOS Y
RODAPIÉS. PÁGINA 266

PORCELAIN TILE TECHNICAL SPECS



CUMPLE
COMPLY

< 0,2%

> 35 N/mm²

CUMPLE
COMPLY

RESISTE
RESISTS

GA-GLA-GHA

CLASE 5

MOHS 5

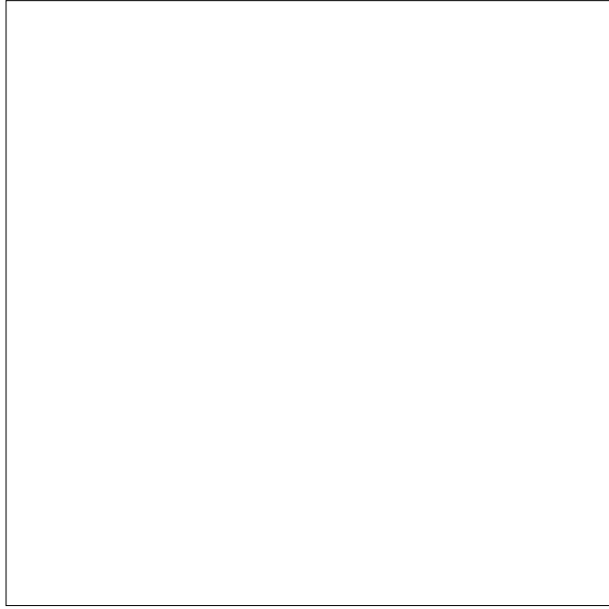
CLASE 1

OO



VISUAL WHITE 60x60

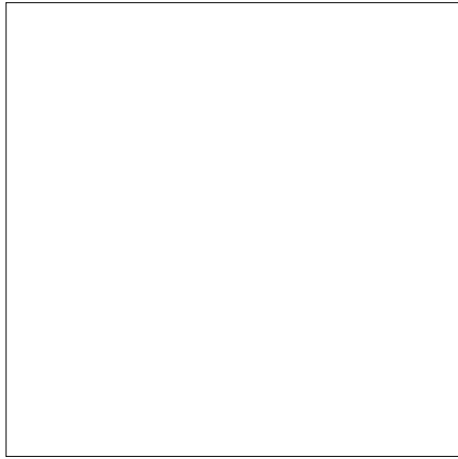
PORCELAIN TILE:



VISUAL WHITE POLISHED 80x80



VISUAL IVORY POLISHED 80x80



VISUAL WHITE POLISHED 60x60



VISUAL IVORY POLISHED 60x60



VISUAL IVORY 60x60

SMART

170 LAND
174 PORTLAND
178 STONE
182 SURFACE



LAND

MASTER
CATALOGUE
ZIRCONIO



SIZE OPTIONS

PORCELAIN TILE:

45x90



60x60



COLLECTION SPECS

COLOURS:

LIGHT GREY



MEDIUM GREY



FINISHINGS:

MATT

NOTES:

- SPECIAL PIECES AVAILABLE:
STEP, CORNER, TREAD, RAIL &
SKIRTING. PAGE 184

- PIEZAS ESPECIALES
DISPONIBLES: PELDAÑOS Y
RODAPIÉS. PÁGINA 184

PORCELAIN TILE TECHNICAL SPECS



CUMPLE
COMPLY

< 0,2%

> 35 N/mm²

CUMPLE
COMPLY

RESISTE
RESISTS

GA-GLA-GHA

CLASE 5

MOHS 5

CLASE 2
R10

● ● ○



LAND MEDIUM GREY 60x60

PORCELAIN TILE:



LAND LIGHT GREY 60x60



LAND LIGHT GREY 45x90



LAND MEDIUM GREY 60x60



LAND MEDIUM GREY 45x90



LAND LIGHT GREY 60x60

PORTLAND

MASTER
CATALOGUE
ZIRCONIO



SIZE OPTIONS

PORCELAIN TILE:

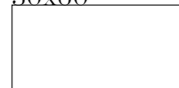
45x90



60x60



30x60



COLLECTION SPECS

COLOURS:

SAND



LIGHT



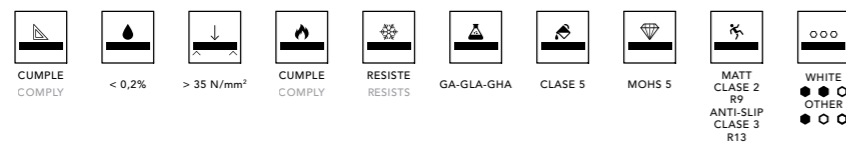
FINISHINGS:

MATT
ANTI-SLIP

NOTES:

- ANTI-SLIP ONLY AVAILABLE IN PORTLAND LIGHT 60x60.
- SPECIAL PIECES AVAILABLE: STEP, CORNER, TREAD, RAIL & SKIRTING. PÁGINA 184
- ANTI-SLIP SÓLO DISPONIBLE EN PORTLAND LIGHT 60x60.
- PIEZAS ESPECIALES DISPONIBLES: PELDAÑOS Y RODAPIÉS. PÁGINA 184

PORCELAIN TILE TECHNICAL SPECS



PORTLAND SAND 60x60

PORCELAIN TILE:



PORTLAND SAND 60x60



PORTLAND SAND 45x90



PORTLAND SAND 30x60



PORTLAND LIGHT 60x60
PORTLAND LIGHT ANTI-SLIP 60x60



PORTLAND LIGHT 45x90



PORTLAND LIGHT 30x60



PORTLAND LIGHT 60x60

STONE

MASTER
CATALOGUE
ZIRCONIO



SIZE OPTIONS

PORCELAIN TILE:

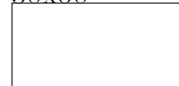
45x90



60x60



30x60



COLLECTION SPECS

COLOURS:

CREAM



LIGHT GREY



FINISHINGS:

MATT

NOTES:

- SPECIAL PIECES AVAILABLE:
STEP, CORNER, TREAD, RAIL &
SKIRTING. PAGE 184

- PIEZAS ESPECIALES
DISPONIBLES: PELDAÑOS Y
RODAPIÉS. PÁGINA 184

PORCELAIN TILE TECHNICAL SPECS



CUMPLE
COMPLY



< 0,2%



> 35 N/mm²



CUMPLE
COMPLY



RESISTE
RESISTS



GA-GLA-GHA



CLASE 5



MOHS 5



CLASE 2
R9



● ● ○

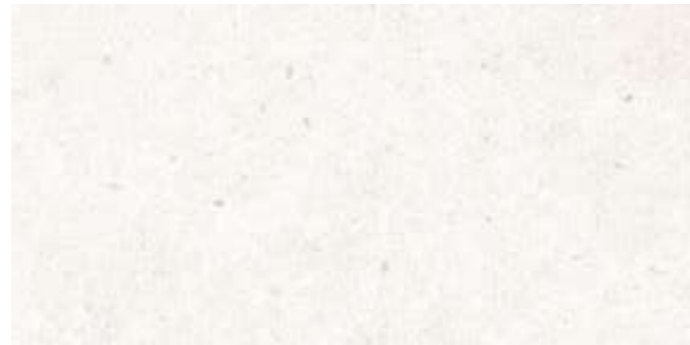


STONE CREAM MATT 60x60

PORCELAIN TILE:



STONE CREAM MATT 60x60



STONE CREAM MATT 45x90



STONE CREAM MATT 30x60



STONE LIGHT GREY MATT 60x60



STONE LIGHT GREY MATT 45x90



STONE LIGHT GREY MATT 30x60



STONE LIGHT GREY 60x60

SURFACE

MASTER
CATALOGUE
ZIRCONIO



SIZE OPTIONS

PORCELAIN TILE:

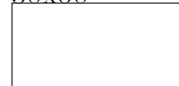
45x90



60x60



30x60



COLLECTION SPECS

COLOURS:

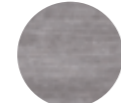
WHITE



LIGHT GREY



DARK GREY



FINISHINGS:

MATT

ANTI-SLIP

NOTES:

- ANTI-SLIP ONLY AVAILABLE AT 30x60 & 60x60 LIGHT GREY AND 30x60 DARK GREY.
- SPECIAL PIECES AVAILABLE: STEP, CORNER, TREAD, RAIL & SKIRTING. PAGE 184

- ANTI-SLIP SÓLO DISPONIBLE EN 30x60 & 60x60 LIGHT GREY Y 30x60 DARK GREY.
- PIEZAS ESPECIALES DISPONIBLES: PELDAÑOS Y RODAPIÉS. PÁGINA 184

PORCELAIN TILE TECHNICAL SPECS



CUMPLE
COMPLY



< 0,2%



> 35 N/mm²



CUMPLE
COMPLY



RESISTE
RESISTS



GA-GLA-GHA



CLASE 5



MOHS 5



MATT
CLASE 2
R10

ANTI-SLIP
CLASE 3
R13



● ● ○



SURFACE WHITE MATT 60x60 · SURFACE DARK GREY MATT 30x60

PORCELAIN TILE:



SURFACE WHITE MATT 60x60



SURFACE WHITE MATT 45x90



SURFACE WHITE MATT 30x60



SURFACE DARK GREY MATT 60x60



SURFACE DARK GREY MATT 45x90



SURFACE DARK GREY MATT 30x60
SURFACE DARK GREY ANTI-SLIP 30x60

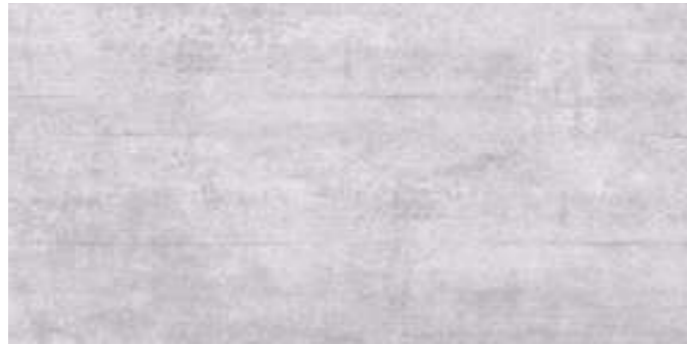


SURFACE WHITE 30x60 - SURFACE WHITE 60x60

PORCELAIN TILE:



SURFACE LIGHT GREY MATT 60x60
SURFACE LIGHT GREY ANTISLIP 60x60



SURFACE LIGHT GREY MATT 45x90



SURFACE LIGHT GREY MATT 30x60
SURFACE LIGHT GREY ANTISLIP 30x60



SURFACE LIGHT GREY 60x60

+ INFO

- 178 USE & CARE TIPS
- 182 TECH SPECS
- 184 SPECIAL PIECES
- 185 SIZE INDEZ
- 186 REFERENCE INDEX
- 190 DISCLAIMER



CARE & TIPS

TILE INSTALLATION

Prior to tile installation, you should verify that the tile to be used corresponds to the item code, size and shade stated on the carton box. Once the tile is fitted, no complaints will be accepted for these reasons.

All surface rendering should be structurally sound and perfectly levelled without cracks, clean and free of dirt, oil, grease, compound and any foreign material which will inhibit proper bonding. Set tile lines according to drawing design on floor. If necessary to do a dry tile lay to check for shade difference. Use tile spacers to leave equal joints between tiles.

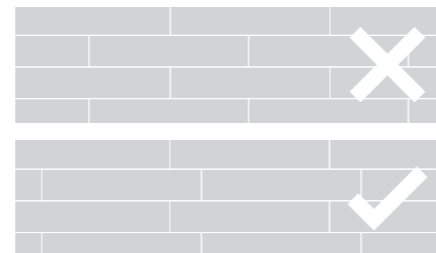
Use the flat side of a trowel and spread the adhesive to obtain mechanical bond and coverage. Using the notched side of the trowel, comb adhesive to obtain even setting bed without scraping backing material. Cover surface uniformly with sufficient adhesive to ensure a minimum thickness of 1mm between tile and backing.

Thereafter, press tile into prepared adhesive bedding, ensuring adhesive contact with tile while maintaining accurate joint alignment and spacing by using tile spacers. We recommend a grouting of 3mm and never less than 1.5mm. Structural, perimeter and expansion joints must also be considered to ensure the long life and movement joints of the tiles.

Remove all adhesive from the surface and edges of the tile. Allow a minimum of 24 hours for evaporation of solvent before grouting unless otherwise recommended by adhesive manufacturer. When the tile and substrate are such that the adhesive does not cure in 24 hours, allow additional time prior to grouting. Install and cure grout thereafter. Subsequently, clean with a damp sponge.

RECOMMENDABLE FITTING FOR LONGER FORMATS

When the longer formats it is very important and advisable for the tiles not to exceed 1/4 offset between these, in all possible forms of discontinuous layout.



TILE CARE AFTER INSTALLATION

Initial cleaning immediately after floor installation is essential and important to remove all mortar, sand and grout residues that may be left. The tiles can be cleaned by scrubbing the installation with clean water and a neutral detergent and with a thorough rinsing.

If grout residue still remains, further cleaning of the tile can be accomplished by using a grout remover. Equipment recommended for more aggressive cleaning are floor scrubbers or floor buffing machines equipped with a nylon pad or brush. A wet vacuum should be used to pick up suspended grout residue and construction dirt completely.

Caution should be exercised when using acid or acid-based cleaners as they can adversely affect the grout. Avoid using hydrofluoric acid to its compounds. If acid is used for cleaning the installation, cautioned to use diluted sulphuric acid or diluted hydrochloric acid mixed in a correct mixture or concentration. It is important that before the acid solution is placed on the floor, the grout joints be thoroughly saturated with water first. Installers should wait until the grout joint has fully cured, usually 7 to 10 days before using acidic cleaners.

SUGGESTIONS FOR USE

When dealing on the correct use of ceramic tile flooring, the laboratory test results on their own are not enough.

Resistance to wear depends not only on technical data but also on where it is installed.

The presence of abrasives, such as sand or gravel, and direct access to the premises from outside, are factors which the lifetime of the flooring.

The following indications are based on the advice given in the tile guide edited by Valencian Building Institute.

ZIRCONIO PROPOSES SIX LEVELS OF USE

○ ○
FLOORS SUBJECTED
TO LIGHT TRAFFIC

These can be installed in bedrooms and bathrooms of private dwellings.

○ ○ ○
FLOORS SUBJECTED
TO MEDIUM-LIGHT TRAFFIC

These can be installed in all rooms of private dwellings.

● ○ ○
FLOORS SUBJECTED
TO MEDIUM PEDESTRIAN TRAFFIC
These can be installed in all rooms of private dwellings, including hotel rooms and bathrooms.

● ● ○
FLOORS SUBJECTED
TO MEDIUM-HEAVY TRAFFIC
These can be installed in public premises, excluding places of heavy traffic.

● ● ●
FLOORS ADAPTED TO HEAVY TRAFFIC
These can be installed in public premises with heavy traffic.

DAILY MAINTENANCE

General maintenance and cleaning of the tiles will vary depending on the surface texture and soil load.

Generally, the cleaning should be performed by:

1. Sweeping or vacuuming to remove loose soil, sand or dirt contaminants.
2. Use damp mop with clean water.
3. Depending on the soil load, a more aggressive cleaning process may be required by using a neutral cleaner or a general household cleaner then followed by a thorough rinsing.

There are five steps that are critical and should always be remembered for the successful maintenance of porcelain tiles:

1. All spills should be cleaned as quickly as possible.
2. Use only the recommended dilution of detergent.
3. Allow proper dwelling of the detergent solution to act on the soil load. Generally 5 – 10 minutes is sufficient.
4. Scrub with a nylon pad or bristle brush.
5. Rinse thoroughly with clean, clear water to remove the dirty detergent solution and emulsified soil.

Rinsing is a critical step in the maintenance procedure. Use a wet vacuum, dry mop or towelling if necessary. If dirty detergent solution is not removed and is allowed to dry on the surface, a coating will form which is very difficult to remove.

CLEANING TIPS

	STAIN	RECOMMENDATION
Food group	Soy sauce, Cola,	Alkaline based detergent
	Coffee/Tea, Juice, Beer	Alkaline based detergent
	Wine, Ice-cream, Ketchup	Alkaline based detergent
Oil and Grease	Vegetal, Mineral, Petroleum	Alkaline based detergent
	Wax, Rubber	Scrape off then use solvent turpentine followed by alkaline base detergent
	Lipstick, Shoe polish	Alkaline based detergent
	Oil based paint	Turpentine or thinner
	Ink	Solvent such as turpentine or thinner
	Mortar Rust stains	Acidic based detergent Diluted hydrochloric acid or acidic based detergent
Marker	Felt pen	Thinner
	Methylene blue	Alkaline based detergent
	Crayon	Scrape off then use solvent turpentine followed by alkaline base detergent
Tile Grout	Cement	Diluted hydrochloric acid
	Latex or polymer	Solvent such as turpentine or thinner
	Epoxy	Scraper to scrape it off

CONSEJOS Y CUIDADO

INSTALACIÓN

Antes de efectuar cualquier operación de colocación de baldosas cerámicas, se debe verificar que el material que va a emplear corresponde al modelo, formato y tono solicitados y que a tal efecto vienen marcados en la caja. Ya que una vez colocado no se atenderán ni aceptarán reclamaciones debidas a estos conceptos.

La superficie debe estar limpia, lisa, seca y libre de cera y grasa. Las zonas que se encuentren dañadas o presenten irregularidades deben ser parcheadas y niveladas para su correcta adherencia. En primer lugar, plantee la colocación de las baldosas cerámicas según el plano de la superficie a revestir. Si es necesario haga una simulación para comprobar el diseño y tono de las piezas. Utilice separadores y crucetas para igualar el ancho de las juntas.

Extienda el adhesivo en la superficie completamente llana para obtener una óptima adherencia. Utilice el lado dentado de la llana para peinar el adhesivo dejando sin raspar material de soporte. Cubra la superficie de manera uniforme con el suficiente adhesivo para asegurar un espesor mínimo de 1mm entre las baldosas y superficie.

Presione la baldosa con el fin de asegurar un adecuado contacto del adhesivo con el azulejo. Para igualar el ancho de las juntas, utilice crucetas y cuñas. Se recomienda una separación entre baldosas de 3 mm y en ningún caso inferior a 1.5 mm. Es también necesario respetar las juntas estructurales, perimetrales y de dilatación para asegurar la durabilidad y el adecuado movimiento de las baldosas.

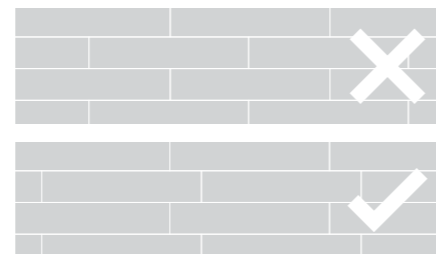
Elimine todo el adhesivo de la superficie y bordes de las baldosas. Espere un mínimo de 24 horas antes del rejuntado a no ser que el fabricante del rejuntado no lo recomiende. Es importante consultar las instrucciones o precauciones específicas, suministradas por el fabricante del material de rejuntado.

Retire el exceso de lechada de la superficie con una esponja húmeda, limpie los residuos del rejuntado y alise las juntas.

MODOS DE COLOCACION

ACONSEJABLE PARA FORMATOS ALARGADOS

Es muy importante y aconsejable que para todas las formas posibles de colocación a rompe-junta en los formatos alargados que, las piezas no rebasen el ¼ de desplazamiento entre ellas.



LOS CUIDADOS POSTERIORES A LA INSTALACIÓN

La primera limpieza debe realizarse inmediatamente después de la instalación. Siendo la misma esencial e importante para eliminar todos los residuos de mortero, arena y lechada que puedan haber quedado. Los azulejos deben limpiarse con agua y un detergente neutro y un posterior aclarado de agua limpia.

Si aún quedan residuos del rejuntado, una limpieza más profunda de la baldosa se puede lograr mediante el uso de un desincrustante de lechada. Para una limpieza más agresiva, recomendamos fregar el pavimento con una máquina equipada con almohadillas o cepillos de nylon y una aspiradora de líquidos, para recoger completamente los residuos en suspensión.

Se debe tener especial precaución cuando se utilizan productos de limpieza a base de ácido, ya que puede afectar negativamente a la baldosa. Evite el uso de "ácido fluorhídrico" y sus compuestos. En caso de utilizarse ácido para la limpieza de la instalación, el ácido "sulfúrico" o el ácido "clorhídrico" debe usarse siempre diluido, y con la correcta concentración. Es importante humedecer a fondo las juntas antes de aplicar la solución de ácido sobre el pavimento. Los instaladores deben esperar hasta que el rejuntado haya fraguado completamente, esperando de 7 a 10 días antes de usar productos de limpieza ácidos.

CONSEJOS DE UTILIZACIÓN

Para la correcta utilización de un pavimento cerámico, no es suficiente el conocimiento de los resultados de las pruebas de laboratorio.

La resistencia al desgaste está influenciada, además de por los datos técnicos propios, por el lugar en que se instala.

La presencia de abrasivos, como la arena o la gravilla, así como los locales con acceso directo desde el exterior, son factores que acortan la duración de la vida de un pavimento.

Las indicaciones que se dan a continuación se basan en los consejos de la Guía de la Baldosa Cerámica editada por el Instituto Valenciano de la Edificación.

ZIRCONIO PROPONE SEIS NIVELES DE USO

○ ○
PAVIMENTOS SOMETIDOS
A TRÁFICO LIGERO
Generalmente se puede colocar en dormitorios y baños de viviendas privadas.

○ ○ ○
PAVIMENTOS SOMETIDOS
A TRÁFICO PEATONAL MODERADO
Pueden ser colocados en todas las habitaciones de las viviendas privadas.

● ○ ○
PAVIMENTOS SOMETIDOS
A TRÁFICO PEATONAL MEDIO
Pueden ser colocados en todas las habitaciones de las viviendas privadas, incluyendo habitaciones de hotel con sus respectivos cuartos de baño.

● ● ○
PAVIMENTOS SOMETIDOS
A TRÁFICO PEATONAL MEDIO-DENSO
Se pueden instalar en lugares públicos, excluyendo los lugares de tráfico intenso.

● ● ●
PAVIMENTOS ADAPTADOS
A TRÁFICO PEATONAL INTENSO
Pueden ser colocado en lugares públicos de tráfico intenso.

MANTENIMIENTO

El mantenimiento y la limpieza general de las baldosas cerámicas variarán dependiendo de la textura de la superficie y del grado de suciedad.

En general, la limpieza se debe realizar del modo siguiente:

1. Barrer o aspirar para eliminar la arena o suciedad sueltas.
2. Usar una mopa humedecida con agua.
3. Dependiendo del grado de suciedad, puede requerir un proceso de limpieza más agresivo, pudiéndose usar un limpiador neutro o un producto para la limpieza general del hogar, seguido por un aclarado a fondo.

Hay cinco pasos que son fundamentales y siempre se deben tener en cuenta para la buena conservación de azulejos y pavimentos porcelánicos:

1. Todos los vertidos o manchas se deben limpiar lo antes posible.
2. Use sólo la dilución de detergente recomendada.
3. Permitir el tiempo necesario para que la solución de detergente actúe. Generalmente, de 5 a 10 minutos es suficiente.
4. Frote con una esponja de nylon o con un cepillo de cerdas.
5. Aclare con agua limpia para eliminar totalmente los restos de detergente y suciedad.

El aclarado es muy importante en el proceso de limpieza. Si es necesario, utilice una aspiradora, mopa o paño seco. Si no se eliminan los restos de detergente y suciedad y estos se secan sobre la superficie, se formará una película muy difícil de eliminar.

CONSEJOS DE LIMPIEZA

	MANCHAS	RECOMENDACIÓN
Grupos de alimentos	Salsa de soja, Coca-Cola, Café, Té, Zumos, Cerveza, Vino, Helado, Tomate	Detergente de base alcalina Detergente de base alcalina Detergente de base alcalina
Aceites y Grasas	Vegetal, Mineral, Petróleo Cera, Caucho Pintalabios, Betún Pintura (base de aceite)	Detergente de base alcalina Frotar con disolvente de trementina seguido de detergente de base alcalina Detergente de base alcalina Trementina o disolvente
	Tinta Mortero Manchas de óxido	Aguarrás o disolvente Detergente de base ácida Dilución de ácido clorhídrico o detergente de base ácida
Marcador	Rotulador Azul de metileno Lápiz	Disolvente Detergente de base alcalina Frotar con disolvente de trementina seguido de detergente de base alcalina
Lechada	Cemento Látex o Polímero Epoxy	Ácido clorhídrico diluido Aguarrás o disolvente Raspar con una rasqueta

TECHNICAL SPECS

TECHNICAL BUILDING REGULATIONS (TBR). PREVENTION OF THE RISK OF FALLS. SLIPPERINESS OF FLOORS.

1. In order to limit the risk of slipping, floors in buildings or areas that are used for Health, Teaching, Commercial, Administrative, Vehicle, Parking and Public purposes, excluding those of restricted use, must fall into the correct category as described in point 3.

2. Floors are categorized according to their slip resistance, as stipulated in table 1.1 (left)

Slip resistance (R_d) is determined using the pendulum test described in Appendix A of regulation UNE-ENV 12633:2003, using the C scale in samples without accelerated wear and tear. <the selected sample must be representative of the most slippery conditions.

3. Table 1.2 shows the minimum categories that flooring must fall into, depending on its location. This classification must be maintained throughout the useful life of the flooring.

TABLE 1.1
Categorization of floors according to slipperiness

Slip resistance R_d	Category
$R_d \leq 15$	0
$15 < R_d \leq 35$	1
$35 < R_d \leq 45$	2
$R_d > 45$	3

TABLE 1.2
Category required from floors, depending on their location

Location and characteristics of the floor	Category R_d
Dry interior areas: - Surfaces with a gradient of less than 6% - Surfaces with a gradient equal to a greater than 6% and stairs.	1 2
Wet interiors areas such as hallways into buildings from the outside (1). covered terraces, changing rooms, bathrooms, shower rooms, WCs, kitchens etc. - Surfaces with a gradient of less than 6% - Surfaces with a gradient equal to a greater than 6% and stairs.	2 3
Interior areas where, as well as water, there may be other liquid agents (grease, lubricants, etc.) that reduce slip resistance, such as industrial kitchens, slaughterhouses, car parks, industrial sites, etc.	3
Exterior areas. Swimming pools - Except for direct pathways to restricted areas - In areas designed for barefoot users and at the bottom of swimming pools. Where the depth does not exceed 1.50 m.	3

CÓDIGO TÉCNICO DE LA EDIFICACIÓN (CTE). SEGURIDAD FRENTE AL RIESGO DE CAÍDAS. RESBALADICIDAD DE LOS SUELOS

1. Con el fin de limitar el riesgo de resbalamiento, los suelos de los edificios o zonas de uso Sanitario, Docente, Comercial, Administrativo, Aparcamiento y Pública Concurrencia, excluidas de las zonas de uso restringido, tendrán una clase adecuada conforme al punto 3 de este apartado.

2. Los suelos se clasifican, en función de su valor de resistencia al deslizamiento R_d de acuerdo con lo establecido en la tabla 1.1. (arriba a la izquierda)

El valor de resistencia al deslizamiento R_d se determina mediante el ensayo del péndulo descrito en el Anexo de la norma UNE-ENV 12633:2003 empleando la escala C en probetas sin desgaste acelerado. La muestra seleccionada será representativa de las condiciones más desfavorables de resbaladidad.

3. La tabla 1.2. indica las clases que deben tener los suelos, como mínimo, en función de su localización. Dicha clase se mantendrá durante su vida útil del pavimento

TABLA 1.1
Clasificación de suelos según resbaladidad

Resistencia al deslizamiento R_d	Category
$R_d \leq 15$	0
$15 < R_d \leq 35$	1
$35 < R_d \leq 45$	2
$R_d > 45$	3

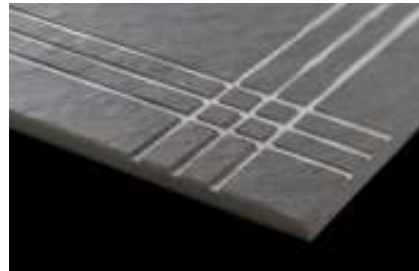
TABLA 1.2
Clase exigible a los suelos en función de su localización

Localización y características del suelo	Clase R_d
Zonas interiores secas: - Superficies con pendiente menos que el 6%. - Superficies con pendiente igual o mayor que el 6% y escaleras.	1 2
Zonas interiores húmedas, tales como las entradas a los edificios, terrazas cubiertas, vestuarios, duchas, baños, aseos, etc. - Superficies con pendiente menos que el 6%. - Superficies con pendiente igual o mayor que el 6% y escaleras.	2 3
Zonas interiores donde, además de agua, pueda haber agentes (grasas, lubricantes, etc.) que reduzcan la resistencia al deslizamiento, tales como cocinas industriales, mataderos, aparcamientos, zonas de uso industrial, etc.	3
Zonas exteriores. Piscinas. - Excepto cuando se trate de accesos directos a zonas de uso restringido. - En zonas previstas para usuarios descalzos y en fondo de piscina, en las que la profundidad no exceda el 1,5m.	3

SPECIAL PIECES

In order to provide solutions to adapt our products to the characteristics of every project, we offer this collection of special pieces composed by skirting and a different solutions for stair steps.

Dando solución a las necesarias adaptaciones de nuestros productos a las características de los diferentes proyectos, ponemos a su disposición esta colección de piezas especiales compuesta de los rodapiés y de las diferentes soluciones de peldaños para escalera.



RAIL

-DISPONIBLE PARA LADO IZQUIERDO Y DERECHO
-AVAILABLE FOR LEFT AND RIGHT SIDE

30x120
20x120
30x60



TREAD

30x120
20x120
30x60



SKIRTING

9x60
9x60
9x60



STEP

-DISPONIBLE CON ACABADO RANURADO
-AVAILABLE FINISH GROOVING

30x120
20x120
30x60




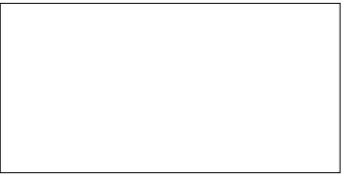



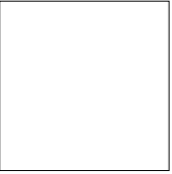



CORNER

-DISPONIBLE PARA LADO IZQUIERO Y DERECHO
-DISPONIBLE CON ACABADO RANURADO
-AVAILABLE FOR LEFT AND RIGHT SIDE
-AVAILABLE FINISH GROOVING

30x120
20x120
30x60

INDEX

SIZE ORDER

SIZE (CM) FORMATO (CM)	COLLECTION COLECCIÓN	PAGE PÁG.	SIZE (CM) FORMATO (CM)	COLLECTION COLECCIÓN	PAGE PÁG.	
45x90 	LAND	158	60x120 	BASIS	40	
	PORTLAND	162		CA MARMO	80	
	STONE	166		CALACATTA	84	
	SURFACE	170		CONCRETE	46	
30x90 	BASIS	40	30x120 	KREA	20	
	CA MARMO	80		NEWPORT	28	
	CALACATTA	84		TIMBER	32	
	CONCRETE	46	20x120 	COLONIAL	10	
	CREMA MARFIL	92		CONCRETE	46	
	ETRURIA	54		DUKE	16	
	LONA	122		KREA	20	
	MANHATTAN	62		NEWPORT	28	
	SILVER	128		TIMBER	32	
	SNOW	146		60x60 	BASIS	40
	TALCO	152			CA MARMO	80
VENATO	106	CALACATTA	84			
		CONCRETE	46			
25x66,6 	ANTIQUE	112	30x60 	CREMA MARFIL	92	
	BASIS	40		ETRURIA	54	
	IDEA	118		IMPERIUM	98	
	MANHATTAN	62		LAND	158	
SNOW	146	MANHATTAN		62		
26x28 	SMOOTH	134		PORTLAND	162	
				RUST	72	
				S. THOMAS	102	
				SMOOTH	134	
				STONE	166	
				SURFACE	170	
			VENATO	106		
				PORTLAND	162	
				STONE	166	
				SURFACE	170	

INDEX

REFERENCE LIST

	NAME NOMBRE	SIZE (MM) FORM. (MM)	PAGE PÁG.	
A	ÁLAMO ASH ANTI-SLIP	200X1200	024	
	ÁLAMO ASH	200X1200	024	
	ÁLAMO ASH	300X1200	024	
	ÁLAMO NATURAL ANTI-SLIP	200X1200	024	
	ÁLAMO NATURAL	200X1200	024	
	ÁLAMO NATURAL	300X1200	024	
	ANTÁRTIDA MATT	300X900	148	
	ANTIQUE GREY	250X666	116	
	ANTIQUE 1 WHITE	250X666	116	
	ANTIQUE WHITE	250X666	116	
B	BAND WHITE	070X300	126	
	BASIS LIGHT GREY	300X900	045	
	BASIS LIGHT GREY	250X666	045	
	BASIS LIGHT GREY LAPPATO	600X1200	045	
	BASIS LIGHT GREY LAPPATO	600X600	045	
	BASIS LIGHT GREY MATT	600X1200	045	
	BASIS LIGHT GREY MATT	600X600	045	
	BASIS WHITE	300X900	042	
	BASIS WHITE	250X666	042	
	BASIS WHITE LAPPATO	600X1200	042	
	BASIS WHITE LAPPATO	600X600	042	
	BASIS WHITE MATT	600X1200	042	
	BASIS WHITE MATT	600X600	042	
	BLOCKS BASIS LIGHT GREY	250X666	045	
	BLOCKS BASIS WHITE	250X666	042	
	C	CA MARMO WHITE	300X900	082
		CA MARMO WHITE MATT	600X1200	082
CA MARMO WHITE MATT		600X600	082	
CA MARMO WHITE POLISHED		600X600	082	
CA MARMO WHITE POLISHED		600X1200	082	
CALACATTA GLOSSY		300X900	091	
CALACATTA MATT		300X900	091	
CALACATTA POLISHED		600X1200	086	
CALACATTA POLISHED		600X600	086	
CALACATTA RELIEF		600X1200	086	

	NAME NOMBRE	SIZE (MM) FORM. (MM)	PAGE PÁG.
	CALACATTA RELIEF	600X600	086
	CALDIA	600X1200	086
	COLONIAL BLACK	200X1200	014
	COLONIAL NATURAL	200X1200	014
	COLONIAL WHITE	200X1200	014
	COLOURS BLANCO GLOSSY	250X666	148
	CONCRETE GREY	600X1200	052
	CONCRETE GREY	600X600	052
	CONCRETE GREY	300X900	052
	CONCRETE TAUPE	600X1200	053
	CONCRETE TAUPE	600X600	053
	CONCRETE TAUPE	300X900	053
	CONCRETE WHITE	300X900	048
	CREMA MARFIL MATT	600X1200	094
	CREMA MARFIL MATT	600X600	094
	CREMA MARFIL MATT	300X900	097
	CREMA MARFIL GLOSSY	300X900	097
	CUBIC ANTÁRTIDA MATT	300X900	148
	CUBIC GLASS GLOSSY	300X900	148
	CUBIC S. THOMAS GLOSSY	300X900	104
	CUBIC S. THOMAS MATT	300X900	104
	CUBIC VENATO GLOSSY	300X900	108
	CUBIC VENATO MATT	300X900	108
D	DECK BLACK	600X600	162
	DECK GREY	600X600	162
	DECK SILVER	600X600	162
	DECK WHITE	600X600	162
	DUBAI TALCO	300X900	154
	DUKE FRESNO	200X1200	018
	DUKE FRESNO GRIP	200X1200	018
	DUKE NOGAL	200X1200	018
	DUKE NOGAL GRIP	200X1200	018
E	ELGON GREY	200X1200	052
	ELGON TAUPE	200X1200	053
	EMIN GREY	300X900	052

	NAME NOMBRE	SIZE (MM) FORM. (MM)	PAGE PÁG.	
	EMIN TAUPE	300X900	053	
	EMIN WHITE	300X900	048	
	ETHNIC BLACK	250X666	120	
	ETRURIA BONE	300X900	059	
	ETRURIA BONE	600X600	060	
	ETRURIA CALIZA	300X900	058	
	ETRURIA CALIZA	600X600	060	
	ETRURIA STONE	300X900	059	
	ETRURIA STONE	600X600	060	
F	FELSINA ETRURIA BONE	300X900	059	
	FELSINA ETRURIA CALIZA	300X900	058	
	FELSINA ETRURIA STONE	300X900	059	
G	GEO ANTÁRTIDA MATT	300X900	148	
	GEO GLASS GLOSSY	300X900	148	
	GEO S. THOMAS GLOSSY	300X900	104	
	GEO S. THOMAS MATT	300X900	104	
	GEO SILVER GLOSSY	300X900	132	
	GEO VENATO GLOSSY	300X900	108	
	GEO VENATO MATT	300X900	108	
	GLASS GLOSSY	300X900	148	
	I	IDEA BLACK	250X666	120
		IDEA WHITE	250X666	120
IMPERIUM BLACK		600X1200	100	
	IMPERIUM BLACK	600X600	100	
K	KAMET GREY	300X900	052	
	KAMET TAUPE	300X900	053	
	KAMET WHITE	300X900	048	
L	LAND LIGHT GREY	600X600	172	
	LAND LIGHT GREY	450X900	172	
	LAND MEDIUM GREY	600X600	172	
	LAND MEDIUM GREY	450X900	172	
	LONA BONE	300X900	126	
	LONA TAUPE	300X900	126	
	LONA WHITE	300X900	126	
M	MADISON ANTRACITE MATT	250X666	071	

	NAME NOMBRE	SIZE (MM) FORM. (MM)	PAGE PÁG.
	MADISON BONE MATT	250X666	067
	MADISON GREY MATT	250X666	068
	MADISON WHITE MATT	250X666	064
	MANHATTAN ANTRACITE MATT	600X1200	071
	MANHATTAN ANTRACITE ANTI-SLIP	600X600	071
	MANHATTAN ANTRACITE MATT	600X600	071
	MANHATTAN ANTRACITE MATT	300X900	071
	MANHATTAN ANTRACITE MATT	250X666	071
	MANHATTAN BONE MATT	600X1200	067
	MANHATTAN BONE MATT	600X600	067
	MANHATTAN BONE MATT	300X900	067
	MANHATTAN BONE MATT	250X666	067
	MANHATTAN GREY MATT	600X1200	068
	MANHATTAN GREY ANTI-SLIP	600X600	068
	MANHATTAN GREY MATT	600X600	068
	MANHATTAN GREY MATT	300X900	068
	MANHATTAN GREY MATT	250X666	068
	MANHATTAN WHITE MATT	600X1200	064
	MANHATTAN WHITE MATT	600X600	064
	MANHATTAN WHITE MATT	300X900	064
	MANHATTAN WHITE MATT	250X666	064
	MAZZA GLOSSY	300X900	091
	MAZZA MARFIL GLOSSY	300X900	097
	MAZZA MARFIL MATT	300X900	097
	MAZZA MATT	300X900	091
	MED BLUE	250X666	116
	MED GREY	250X666	116
	MOSAIC-6 SMOOTH ANTRACITE	300X300	140
	MOSAIC-6 SMOOTH BEIGE	300X300	136
	MOSAIC-6 SMOOTH BLACK	300X300	144
	MOSAIC-6 SMOOTH GREY	300X300	139
	MOSAIC-6 SMOOTH WHITE	300X300	144
N	NEWPORT BEIGE	200X1200	030
	NEWPORT BEIGE	300X1200	030
	NEWPORT GREY	200X1200	030

NAME NOMBRE	SIZE (MM) FORM. (MM)	PAGE PÁG.
NEWPORT GREY	300X1200	030
NEWPORT WHITE	200X1200	030
NEWPORT WHITE	300X1200	030
NOLITA BONE MATT	600X600	067
NOLITA GREY MATT	600X600	068
O OREGÓN AVENA ANTI-SLIP	200X1200	027
OREGÓN AVENA	200X1200	027
OREGÓN AVENA	300X1200	027
OREGÓN LINO ANTI-SLIP	200X1200	027
OREGÓN LINO	200X1200	027
OREGÓN LINO	300X1200	027
P PERFIL SILVER	050X900	056
PLINTH WHITE	150X300	126
POLAR BLANCO MATT	250X666	148
PORTLAND LIGHT ANTI-SLIP	600X600	176
PORTLAND LIGHT	600X600	176
PORTLAND LIGHT	450X900	176
PORTLAND LIGHT	300X600	176
PORTLAND SAND	600X600	176
PORTLAND SAND	450X900	176
PORTLAND SAND	300X600	176
PRISMA ANTÁRTIDA MATT	300X900	148
PRISMA ETRURIA BONE	300X900	059
PRISMA ETRURIA CALIZA	300X900	058
PRISMA ETRURIA STONE	300X900	059
PRISMA GLASS GLOSSY	300X900	148
PRISMA SILVER GLOSSY	300X900	132
R RUMA ETRURIA BONE	300X900	059
RUMA ETRURIA CALIZA	300X900	058
RUMA ETRURIA STONE	300X900	059
RUST OXIDE MATT	600X1200	076
RUST OXIDE LAPPATO	600X1200	076
RUST OXIDE MATT	600X600	076

NAME NOMBRE	SIZE (MM) FORM. (MM)	PAGE PÁG.
RUST OXIDE LAPPATO	600X600	076
RUST NICKEL MATT	600X1200	076
RUST NICKEL LAPPATO	600X1200	076
RUST NICKEL MATT	600X600	076
RUST NICKEL LAPPATO	600X600	076
RUST STEEL MATT	600X1200	076
RUST STEEL LAPPATO	600X1200	076
RUST STEEL MATT	600X600	076
RUST STEEL LAPPATO	600X600	076
S S. THOMAS GLOSSY	300X900	104
S. THOMAS MATT	300X900	104
S. THOMAS MATT	600X600	104
S. THOMAS POLISHED	600X600	104
S. THOMAS POLISHED	600X1200	104
SÁNDALO ENEA ANTI-SLIP	200X1200	024
SÁNDALO ENEA	200X1200	024
SÁNDALO ENEA	300X1200	024
SÁNDALO NUEZ ANTI-SLIP	200X1200	027
SÁNDALO NUEZ	200X1200	027
SÁNDALO NUEZ	300X1200	027
SILVERY	250X666	116
SOHO ANTRACITE MATT	300X900	071
SOHO BONE MATT	300X900	067
SOHO GREY MATT	300X900	068
SOHO WHITE MATT	300X900	064
SMOOTH ANTRACITE MATT	600X1200	140
SMOOTH ANTRACITE MATT	600X600	140
SMOOTH BEIGE MATT	600X1200	136
SMOOTH BEIGE MATT	600X600	136
SMOOTH BLACK LAPPATO	600X1200	144
SMOOTH BLACK LAPPATO	600X600	144
SMOOTH BLACK MATT	600X1200	144
SMOOTH BLACK MATT	600X600	144

NAME NOMBRE	SIZE (MM) FORM. (MM)	PAGE PÁG.
SMOOTH GREY MATT	600X1200	139
SMOOTH GREY MATT	600X600	139
SMOOTH WHITE LAPPATO	600X1200	144
SMOOTH WHITE LAPPATO	600X600	144
SMOOTH WHITE MATT	600X1200	144
SMOOTH WHITE MATT	600X600	144
STONE CREAM MATT	600X600	180
STONE CREAM MATT	450X900	180
STONE CREAM MATT	300X600	180
STONE LIGHT GREY MATT	600X600	180
STONE LIGHT GREY MATT	450X900	180
STONE LIGHT GREY MATT	300X600	180
SURFACE DARK GREY ANTI-SLIP	300X600	184
SURFACE DARK GREY MATT	600X600	184
SURFACE DARK GREY MATT	450X900	184
SURFACE DARK GREY MATT	300X600	184
SURFACE LIGHT GREY ANTI-SLIP	600X600	186
SURFACE LIGHT GREY ANTI-SLIP	300X600	186
SURFACE LIGHT GREY MATT	450X900	186
SURFACE LIGHT GREY MATT	600X600	186
SURFACE LIGHT GREY MATT	300X600	186
SURFACE WHITE MATT	600X600	184
SURFACE WHITE MATT	450X900	184
SURFACE WHITE MATT	300X600	184
T TALCO	300X900	154
TEMPUS MARFIL GLOSSY	300X900	097
TEMPUS MARFIL MATT	300X900	097
TIMBER CENIZA ANTI-SLIP	200X1200	034
TIMBER CENIZA	300X1200	034
TIMBER CENIZA	200X1200	034
TIMBER LINO ANTI-SLIP	200X1200	034
TIMBER LINO	300X1200	034
TIMBER LINO	200X1200	034

NAME NOMBRE	SIZE (MM) FORM. (MM)	PAGE PÁG.
TIMBER NATURAL ANTI-SLIP	200X1200	036
TIMBER NATURAL	300X1200	036
TIMBER NATURAL	200X1200	036
TIMBER NUEZ ANTI-SLIP	200X1200	037
TIMBER NUEZ	300X1200	037
TIMBER NUEZ	200X1200	037
TOKIO SILVER	300X900	132
TOKIO TALCO	300X900	154
V VENATO GLOSSY	300X900	108
VENATO MATT	300X900	108
VENATO POLISHED	600X600	108
VENATO POLISHED	600X1200	108
VENATO MATT	600X600	108
VISUAL IVORY POLISHED	800X800	166
VISUAL IVORY POLISHED	600X600	166
VISUAL WHITE POLISHED	800X800	166
VISUAL WHITE POLISHED	600X600	166
W WAVE ANTÁRTIDA MATT	300X900	148
WAVE BASIS LIGHT GREY	300X900	045
WAVE BASIS WHITE	300X900	042
WAVE CA MARMO WHITE	300X900	082
WAVE GLASS GLOSSY	300X900	148

DISCLAIMER

The management of NIRO CERAMIC GROUP reserves the right to phase-out, either totally or partially, any of the collections, colours, sizes and references contained in this catalogue.

IMPORTANT INFORMATION

Tiles decorated with lustre effects, mother-of-pearl, and gold colour, should be treated carefully during the cleaning process. The use of pure or diluted acids, detergents or other corrosive products may significantly alter the tile appearance.

We recommend cleaning these decorated tiles with a soft sponge and water only.

In failing to comply with the recommendation, the manufacturer will not be responsible for any defect.

Colour variations: since the colour reproduction in this printed catalogue will vary from the actual tile colour, your final selection should be made from tile samples.

Colour, shade and glaze variations may exist due to the inherent characteristics of ceramic tiles.

ZIRCONIO
— *the Quintessential* —



made
in
Spain

ZIRCONIO REMAINS TRUE TO ITS ROOTS, OUR PRODUCTS ACROSS THE ENTIRE COMPANY ARE MADE LOCALLY AT OUR HOME IN **VILA-REAL**.

EXPORTING CERAMICS WORLDWIDE AND SUPPORTING THE LOCAL BUSINESSES BESIDE US THROUGH OUR HALF CENTURY OF TRADING.

ZIRCONIO PERMANECE FIEL A SUS RAICES, TODOS NUESTROS PRODUCTOS ESTÁN CREADOS LOCALMENTE EN NUESTRA TIERRA, **VILA-REAL**.

EXPORTAMOS PRODUCTOS CERÁMICOS ALREDEDOR DEL MUNDO, PERO MANTENIENDO NUESTRO APOYO A LOS NEGOCIOS LOCALES QUE NOS HAN ACOMPAÑADO A LO LARGO DE MEDIO SIGLO.



MASTER CATALOGUE

EDITED
2018



NIRO CERAMICA ESPAÑA S.L.U

CTRA. DE ONDA KM.3
APDO. CORREOS 76
12540 VILA-REAL,
CASTELLÓN, SPAIN
TEL: +34 964 521 100
FAX: +34 964 523 938

ART DIRECTION: **VXLAB** BRANDING & DESIGN MANAGEMENT www.vxlab.org



2018

WWW.ZIRCONIO.ES

zirconio@zirconio.es | +34 964 521 100